

GARMIN®



2019

BLUECHART®
AVAILABILITY

CONTENTS

BlueChart [®] g3 & BlueChart [®] g3 Vision	04
Active Captain [®]	05
How to read your Product ID code	08
United States	09
Canada	14
Caribbean	16
Bermuda	17
Europe	18
South America	27
Africa	28
Asia	29
Russia	31
Australia/New Zealand	32
Pacific Islands	35
Greenland	36
Standard Mapping	38

NEW

BLUECHART® COASTAL CHARTS

FEATURING  NAVIONICS® DATA

Worldwide coverage available

ACTIVECAPTAIN® APP



Give yourself the advantages of the ultimate connected boating experience. Download the free all-in-one ActiveCaptain app. It provides you with a powerful connection to your Garmin chartplotter, charts, maps and the community. Wherever you are, you can have unlimited access to your cartography, purchase new maps and charts, and access the Garmin Quickdraw™ Contours Community.

BLUECHART® G3 □

Experience unparalleled coverage and brilliant detail when you're on the water. BlueChart g3 coastal charts provide industry-leading coverage, clarity and detail with integrated Garmin and Navionics content. The charts also calculate suggested routes with Auto Guidance¹.

BLUECHART® G3 VISION ■

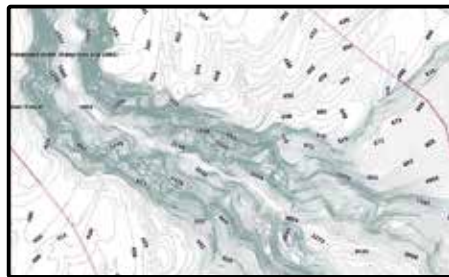
BlueChart g3 Vision is our premium chart offering, which includes all the reliability, features and integrated Garmin and Navionics content of BlueChart g3 while adding even more industry-leading features such as high-resolution elevation shading, to help you along your journeys.

ADVANCED CHART DETAIL □ ■



Highly detailed charts with Navionics data help mariners guide their boats in and out of port with confidence.

DETAILED CONTOURS □ ■



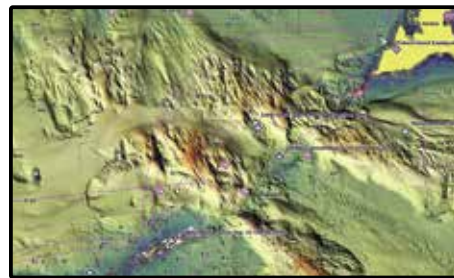
BlueChart g3 features up to 1' contours that provide a more accurate depiction of bottom structure for improved fishing charts and enhanced detail in swamps, canals and port plans.

AUTO GUIDANCE □ ■



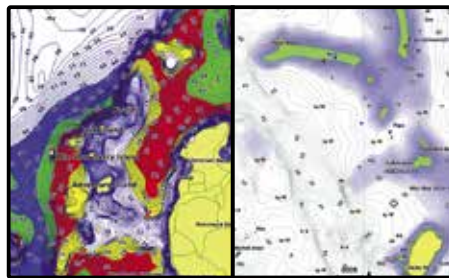
Charts include Auto Guidance¹ technology to calculate suggested routes.

HIGH-RESOLUTION ELEVATION SHADING ■



Highly detailed shading that combines color and shadow to provide an easy-to-interpret, clearer view of bottom structure than contour lines alone.

DEPTH RANGE/SHALLOW WATER SHADING □ ■



High-resolution depth range shading for up to 10 depth ranges and shallow water shading for a user-defined depth gives a clear picture of shallow waters to avoid.

HIGH-RESOLUTION SATELLITE IMAGERY ■



High-resolution satellite imagery overlaid onto navigational charts provides a realistic view of your surroundings.

AERIAL PHOTOGRAPHY ■



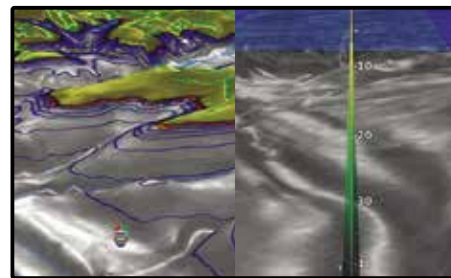
Pictures show exceptional detail of many ports, harbors and marinas. This is ideal when entering unfamiliar ports.

RASTER CARTOGRAPHY □ ■



Download NOAA raster areas for free via the ActiveCaptain® app to provide enhanced clarity and consistency.

3-D VIEWS ■



MarinersEye and FishEye views provide 3-D representations of the surrounding area above and below the waterline.

SPECIAL ACTIVECAPTAIN FEATURES

OneChart™ gives you access to all your charts and maps from your mobile device and lets you purchase new ones

Receive smart notifications, such as calls and texts, on your chartplotter display when paired with the app

Download software updates and notifications from the app directly to your Garmin devices

Connect to fellow boaters with the ActiveCaptain community for up-to-date feedback on marinas and other points of interest

Make, save and transfer routes and waypoints between the app and chartplotter – with zero button presses¹

Easily upload and download the latest Garmin Quickdraw™ Contours content from the community – with zero button presses¹

View and control your chartplotter from your smartphone or tablet



NEW CHART GUARANTEE

Customers who purchase new preprogrammed Garmin BlueChart g3 or BlueChart g3 Vision microSD™ cards are entitled to 1 free update² of the newest version of charts. If eligible, customers can update cards using our website. Updated charts will be for the same (or equivalent³) region as the original purchase.

DISCOUNTED CARD UPDATE PROGRAM

Customers may update their existing preprogrammed BlueChart g3 and BlueChart g3 Vision microSD/SD card for a discounted price². Updated charts will be for the same (or equivalent³) region as the original purchase.

¹Auto Guidance is for planning purposes only and does not replace safe navigation operations. Not all chart features will display on all devices, particularly legacy devices. As engineering enhancements are ongoing, new features may not display on such legacy products, as well.

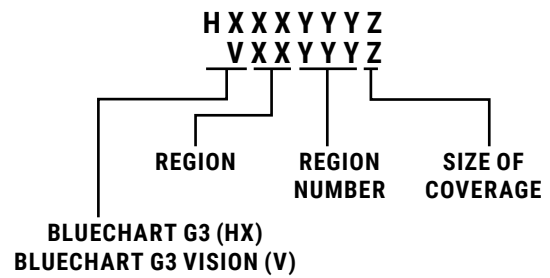
²Zero button presses applies to GPSMAP® chartplotters only • ³Limit 1 free update per card. New Chart Guarantee valid within 12 months of purchase. ³Equivalent region to be determined at the sole discretion of Garmin. Customer will have an opportunity to view available coverage before purchasing and/or updating.

COASTAL CHARTS



HOW TO READ YOUR PRODUCT ID CODE

UNITED STATES



REGION (XX) CODES INCLUDE:

- AE = Asia, East (Japan, China, Indonesia, etc.)
- AF = Africa
- AW = Asia, West
- CA = Canada
- EU = Europe (including all Mediterranean Sea)
- PC = Pacific Ocean (Australia, New Zealand, etc.)
- SA = South America
- US = United States and the Caribbean

SIZE OF COVERAGE (Z) CODES INCLUDE:

- X = X-Large
- L = Large
- R = Regular
- S = Small
- P = Petite
- F = Fishing



UNITED STATES ALL AND CANADIAN WEST COAST

BLUECHART G3 U.S. All and Canadian West Coast

Region	US604X
ID Code	HXUS604X
Part Number	010-C1018-20
Price	\$219.99



UNITED STATES WEST COAST

BLUECHART G3 VISION

	Vancouver-San Diego	Hawaiian Islands-Mariana Islands
Region	US037R	US027R
ID Code	VUS037R	VUS027R
Part Number	010-C1003-00	010-C0728-00
Price	\$349.99	\$349.99

BLUECHART G3

	Hawaiian Islands-Mariana Islands
Region	US027R
ID Code	HXUS027R
Part Number	010-C0728-20
Price	\$149.99

BLUECHART G2 VISION HD

	California-Mexico
Region	US021R
ID Code	VUS021R
Part Number	010-C0722-00
Price	\$349.99

BLUECHART G2 HD

	California-Mexico
Region	US021R
ID Code	HXUS021R
Part Number	010-C0722-20
Price	\$149.99

GULF OF MEXICO



BLUECHART G3 VISION

	Southwest Florida	Tampa-New Orleans	Mobile-Lake Charles	Morgan City-Brownsville	Brownsville-Key Largo
Region	US011R	US012R	US013R	US014R	US515L
ID Code	VUS011R	VUS012R	VUS013R	VUS014R	VUS515L
Part Number	010-C0712-00	010-C0713-00	010-C0714-00	010-C0715-00	010-C0744-00
Price	\$349.99	\$349.99	\$349.99	\$349.99	\$449.99

UNITED STATES EAST COAST



BLUECHART G3 VISION

	St. John-Cape Cod	Boston-Norfolk	Mid-Atlantic	Jacksonville-Bahamas
Region	US510L	US511L	US512L	US513L
ID Code	VUS510L	VUS511L	VUS512L	VUS513L
Part Number	010-C0739-00	010-C0740-00	010-C0741-00	010-C0742-00
Price	\$449.99	\$449.99	\$449.99	\$449.99



UNITED STATES SOUTHEAST COAST

BLUECHART G3 VISION

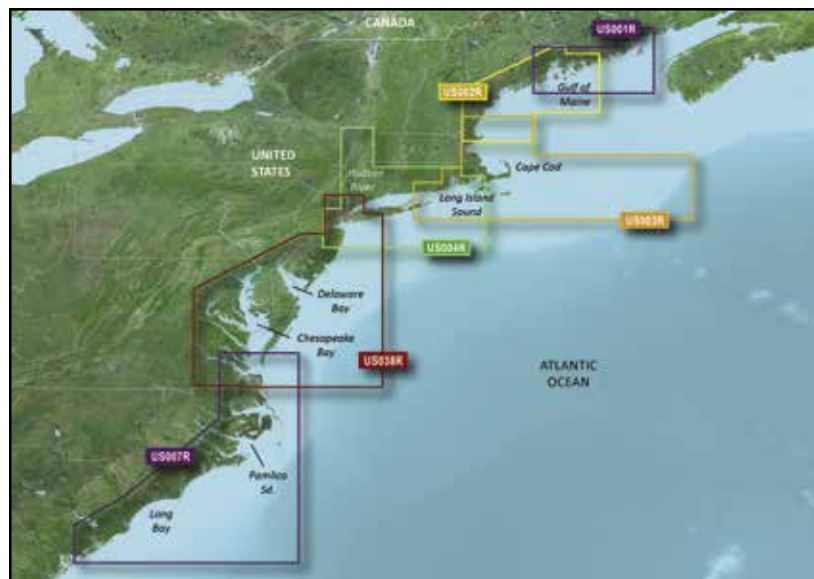
	Charleston-Jacksonville	Jacksonville-Key West
Region	US008R	US009R
ID Code	VUS008R	VUS009R
Part Number	010-C0709-00	010-C0710-00
Price	\$349.99	\$349.99



UNITED STATES ALASKA

BLUECHART G3 VISION

	Anchorage-Juneau	Wrangell / Juneau / Sitka	Wrangell-Dixon Entrance	North Slope Alaska	Bristol Bay-Kotzebue Snd.	Aleutian Islands
Region	US025R	US026R	US024R	US035R	US033R	US034R
ID Code	VUS025R	VUS026R	VUS024R	VUS035R	VUS033R	VUS034R
Part Number	010-C0726-00	010-C0727-00	010-C0725-00	010-C0736-00	010-C0734-00	010-C0735-00
Price	\$349.99	\$349.99	\$349.99	\$349.99	\$349.99	\$349.99



UNITED STATES NORTHEAST COAST

BLUECHART G3 VISION

	North Maine	South Maine	Cape Cod	New York	New York-Chesapeake	Norfolk-Charleston
Region	US001R	US002R	US003R	US004R	US038R	US007R
ID Code	VUS001R	VUS002R	VUS003R	VUS004R	VUS038R	VUS007R
Part Number	010-C0702-00	010-C0703-00	010-C0704-00	010-C0705-00	010-C1004-00	010-C0708-00
Price	\$349.99	\$349.99	\$349.99	\$349.99	\$349.99	\$349.99



UNITED STATES ALASKA 2

BLUECHART G3 VISION

	Alaska South
Region	US517L
ID Code	VUS517L
Part Number	010-C0887-00
Price	\$449.99

CANADA



CANADA

BLUECHART G3 VISION

	St. Lawrence Seaway
Region	US020R
ID Code	VUS020R
Part Number	010-C0721-00
Price	\$349.99

BLUECHART G3

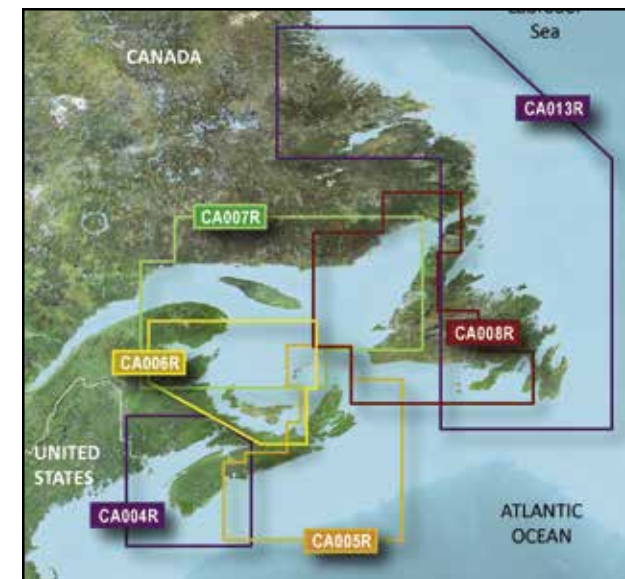
	Canada
Region	CA600X
ID Code	HXCA600X
Part Number	010-C1019-20
Price	\$149.99



CANADA WEST

BLUECHART G3 VISION

	Puget Sound-Dixon Entrance	Hecate Strait	Inside-Outside Passage
Region	CA501L	CA019R	CA018R
ID Code	VCA501L	VCA019R	VCA018R
Part Number	010-C0701-00	010-C1106-00	010-C1105-00
Price	\$449.99	\$349.99	\$349.99



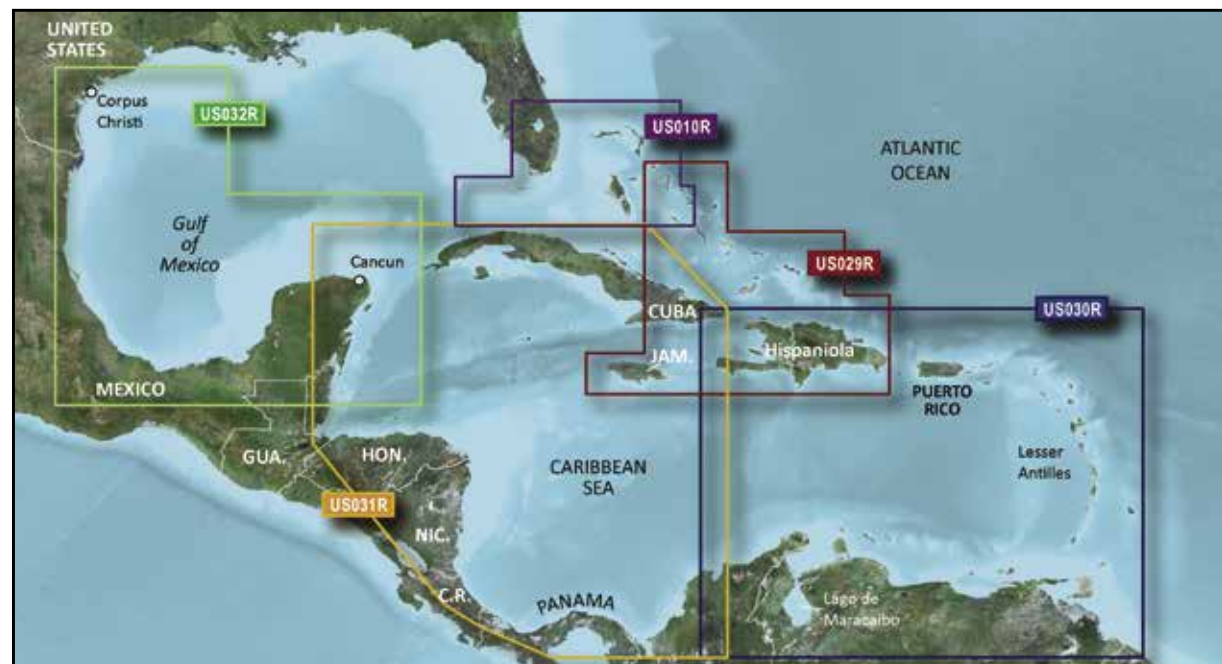
CANADA EAST

BLUECHART G3 VISION

	Bay of Fundy	Halifax-Cape Breton	P.E.I.-Chaleur Bay	Les Mechins-St. George's Bay	Newfoundland West	Labrador Coast
Region	CA004R	CA005R	CA006R	CA007R	CA008R	CA013R
ID Code	VCA004R	VCA005R	VCA006R	VCA007R	VCA008R	VCA013R
Part Number	010-C0690-00	010-C0691-00	010-C0692-00	010-C0693-00	010-C0694-00	010-C0698-00
Price	\$349.99	\$349.99	\$349.99	\$349.99	\$349.99	\$349.99

CARIBBEAN

BERMUDA



CARIBBEAN



BERMUDA

BLUECHART G3 VISION

	Southeast Florida and Bahamas	Southern Bahamas
Region	US010R	US029R
ID Code	VUS010R	VUS029R
Part Number	010-C0711-00	010-C0730-00
Price	\$349.99	\$349.99

BLUECHART G3

	Southern Bahamas
Region	US029R
ID Code	HXUS029R
Part Number	010-C0730-20
Price	\$149.99

BLUECHART G2 VISION HD

	Southeast Caribbean	Southwest Caribbean	Southern Gulf of Mexico
Region	US030R	US031R	US032R
ID Code	VUS030R	VUS031R	VUS032R
Part Number	010-C0731-00	010-C0732-00	010-C0733-00
Price	\$349.99	\$349.99	\$349.99

BLUECHART G2 HD

	Southeast Caribbean	Southwest Caribbean	Southern Gulf of Mexico
Region	US030R	US031R	US032R
ID Code	HXUS030R	HXUS031R	HXUS032R
Part Number	010-C0731-20	010-C0732-20	010-C0733-20
Price	\$149.99	\$149.99	\$149.99

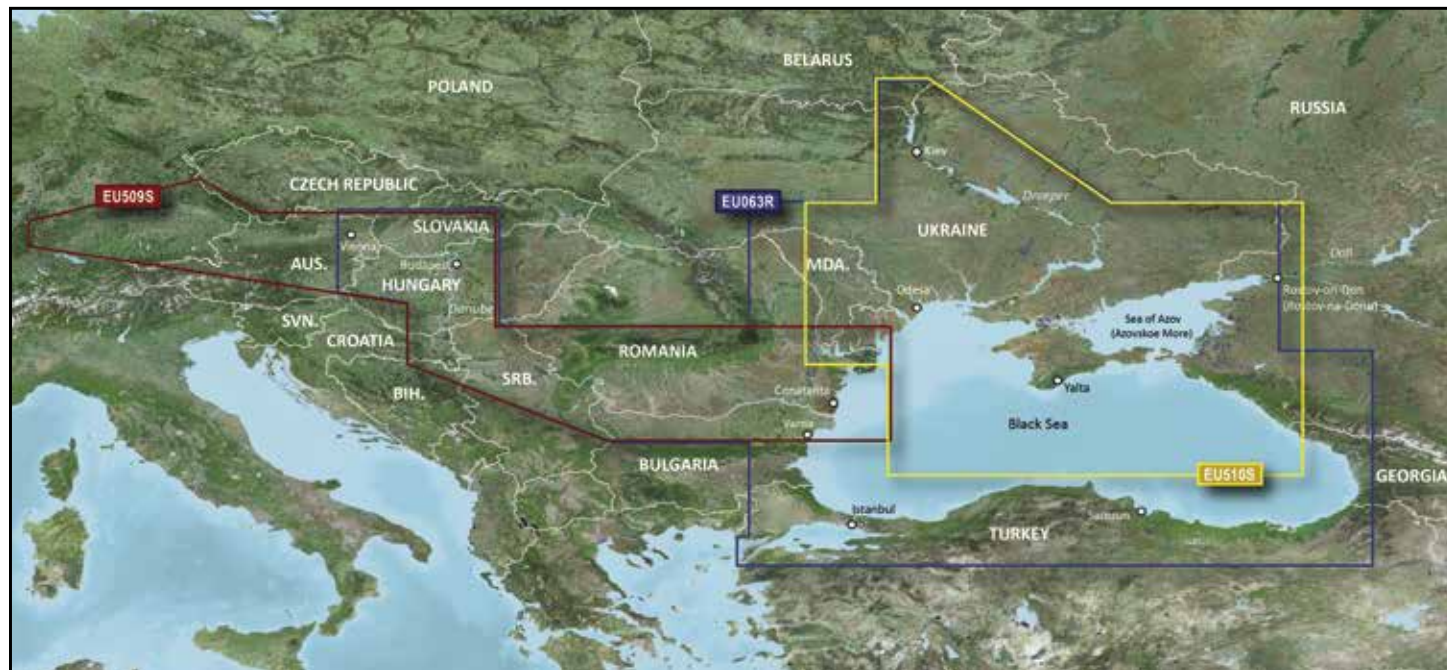
BLUECHART G3 VISION

	Bermuda
Region	US048R
ID Code	VUS048R
Part Number	010-C1024-00
Price	\$349.99

BLUECHART G3

	Bermuda
Region	US048R
ID Code	HXUS048R
Part Number	010-C1024-20
Price	\$149.99

EUROPE



BLACK SEA

BLUECHART G3 VISION

	Black Sea and Sea of Azov	Danube River	Dnieper River and Sea of Azov
Region	EU063R	EU509S	EU510S
ID Code	VEU063R	VEU509S	VEU510S
Part Number	010-C1064-00	010-C1127-00	010-C1128-00
Price	\$249.99	\$174.99	\$174.99

BLUECHART G3

	Black Sea and Sea of Azov
Region	EU063R
ID Code	HXEU063R
Part Number	010-C1064-20
Price	\$129.99



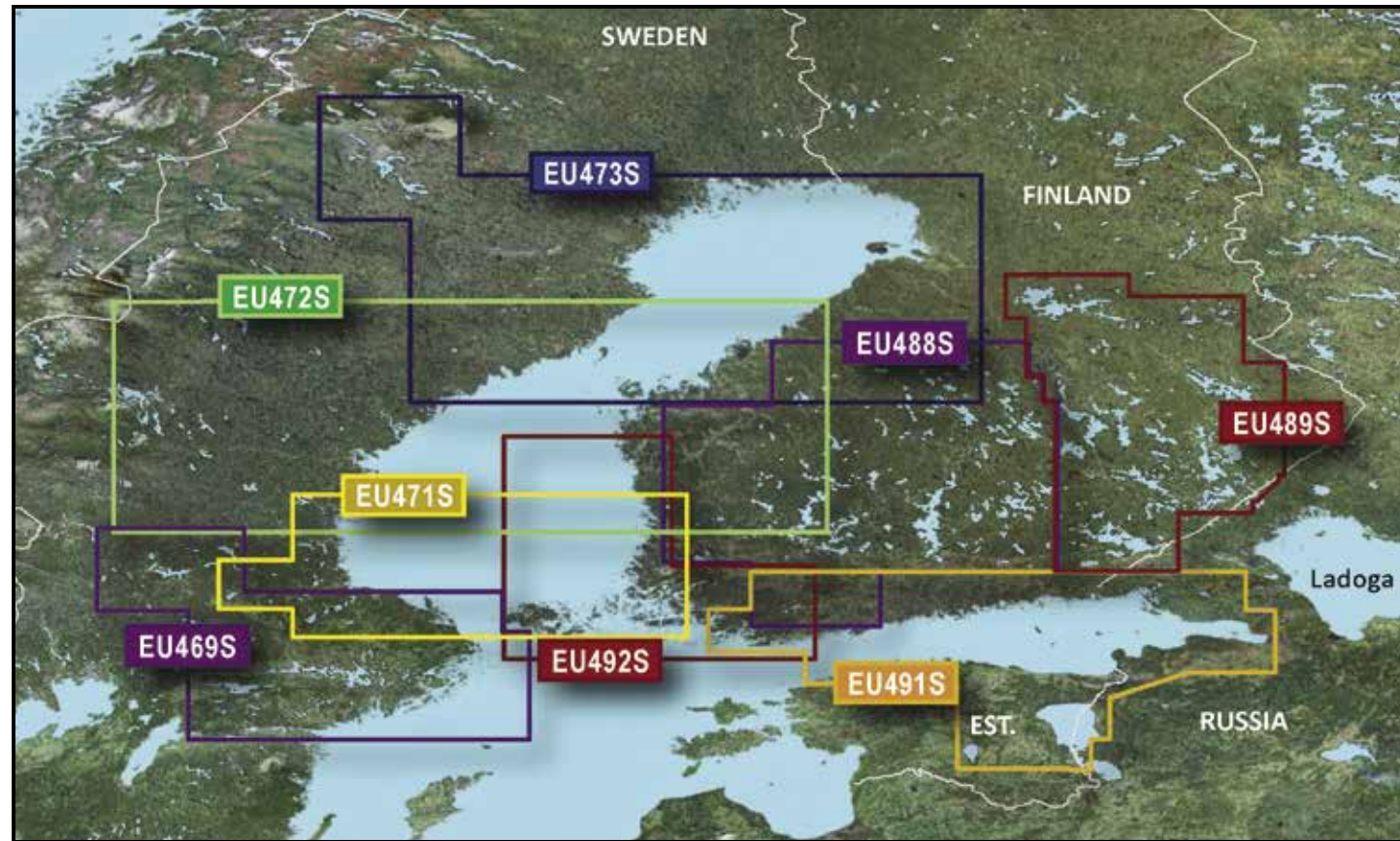
NORDICS 1

BLUECHART G3 VISION

	Vestfjd-Svalbard-Varanger	Northern Europe
Region	EU054R	EU721L
ID Code	VEU054R	VEU721L
Part Number	010-C0790-00	010-C1155-00
Price	\$299.99	\$349.99

BLUECHART G3

	Vestfjd-Svalbard-Varanger
Region	EU054R
ID Code	HXEU054R
Part Number	010-C0790-20
Price	\$129.99

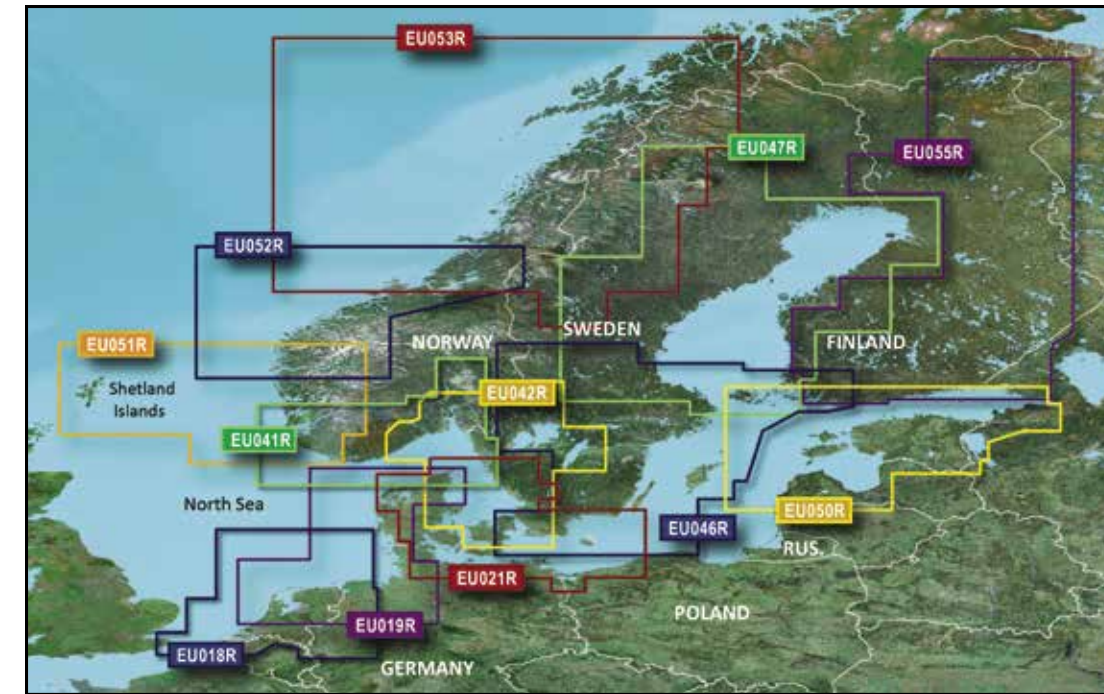


NORDICS 2

BLUECHART G3 VISION

	Gulf of Bothnia, North	Gulf of Bothnia, Center	Gulf of Bothnia, South	Stockholm and Mälaren
Region	EU473S	EU472S	EU471S	EU469S
ID Code	VEU473S	VEU472S	VEU471S	VEU469S
Part Number	010-C0817-00	010-C0816-00	010-C0815-00	010-C0813-00
Price	\$174.99	\$174.99	\$174.99	\$174.99

	Kristinestad-Hanko	Hanko-St. Petersburg-Tallinn	Keitele-Paijanne-Tampere	Kuopio-Lappeenranta
Region	EU492S	EU491S	EU488S	EU489S
ID Code	VEU492S	VEU491S	VEU488S	VEU489S
Part Number	010-C0836-00	010-C0835-00	010-C0832-00	010-C0833-00
Price	\$174.99	\$174.99	\$174.99	\$174.99



NORDICS 3

BLUECHART G3 VISION

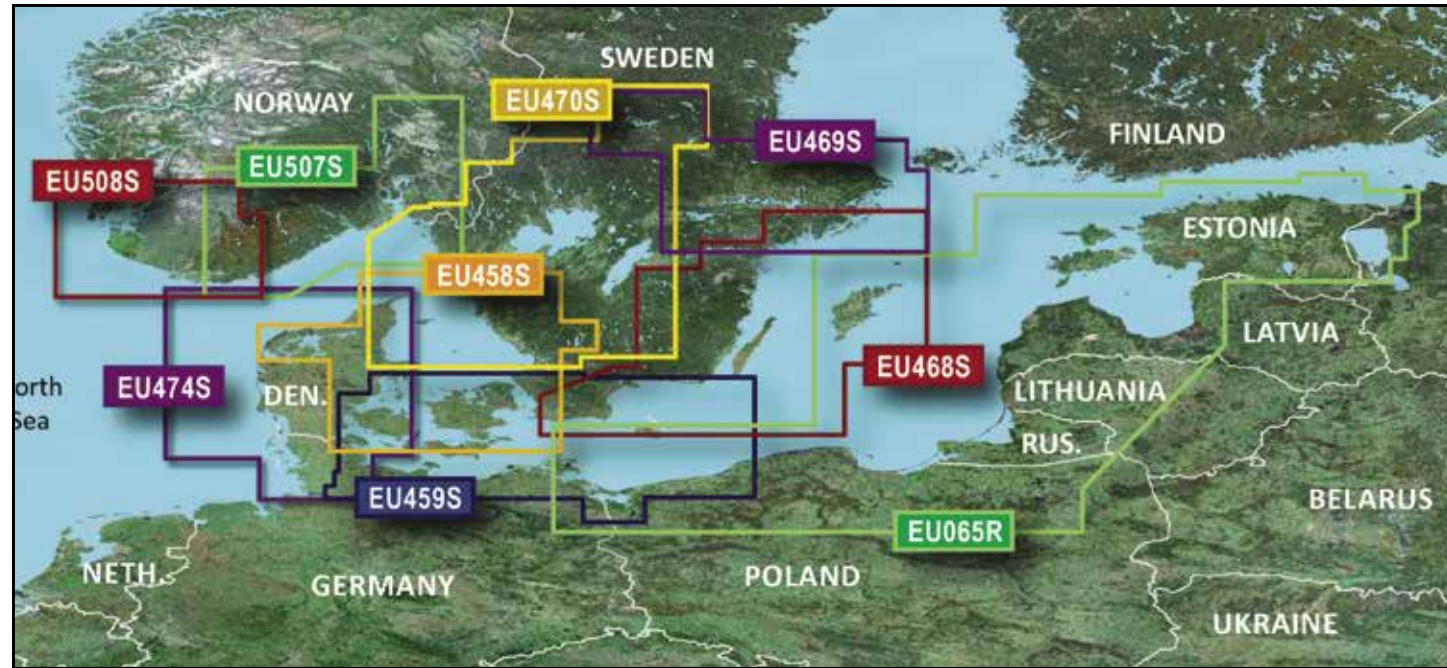
	Lista-Sognefjorden	Sognefjorden-Svefjorden	Trondheim-Tromsø	Finnish Lakes	Gulfs of Finland and Riga	Oslo-Skagerrak-Haugesund
Region	EU051R	EU052R	EU053R	EU055R	EU050R	EU041R
ID Code	VEU051R	VEU052R	VEU053R	VEU055R	VEU050R	VEU041R
Part Number	010-C0787-00	010-C0788-00	010-C0789-00	010-C0791-00	010-C0786-00	010-C0778-00
Price	\$299.99	\$299.99	\$299.99	\$299.99	\$299.99	\$299.99

	Oslo-Trelleborg	Sweden, South-East	Gulf of Bothnia-Kalix-Grisslehamn	Benelux Offshore and Inland Waters	Aalborg-Amsterdam	Denmark East and Sweden SE
Region	EU042R	EU046R	EU047R	EU018R	EU019R	EU021R
ID Code	VEU042R	VEU046R	VEU047R	VEU018R	VEU019R	VEU021R
Part Number	010-C0779-00	010-C0782-00	010-C0783-00	010-C0775-00	010-C0776-00	010-C0777-00
Price	\$299.99	\$299.99	\$299.99	\$299.99	\$299.99	\$299.99

BLUECHART G3

	Lista-Sognefjorden	Sognefjorden-Svefjorden	Trondheim-Tromsø	Finnish Lakes	Gulfs of Finland and Riga	Oslo-Skagerrak-Haugesund
Region	EU051R	EU052R	EU053R	EU055R	EU050R	EU041R
ID Code	HXEU051R	HXEU052R	HXEU053R	HXEU055R	HXEU050R	HXEU041R
Part Number	010-C0787-20	010-C0788-20	010-C0789-20	010-C0791-20	010-C0786-20	010-C0778-20
Price	\$199.99	\$199.99	\$199.99	\$199.99	\$199.99	\$199.99

	Oslo-Trelleborg	Sweden, South-East	Gulf of Bothnia-Kalix-Grisslehamn	Benelux Offshore and Inland Waters	Alborg-Amsterdam	Denmark East and Sweden SE
Region	EU042R	EU046R	EU047R	EU018R	EU019R	EU021R
ID Code	HXEU042R	HXEU046R	HXEU047R	HXEU018R	HXEU019R	HXEU021R
Part Number	010-C0779-20	010-C0782-20	010-C0783-20	010-C0775-20	010-C0776-20	010-C0777-20
Price	\$199.99	\$199.99	\$199.99	\$199.99	\$199.99	\$199.99



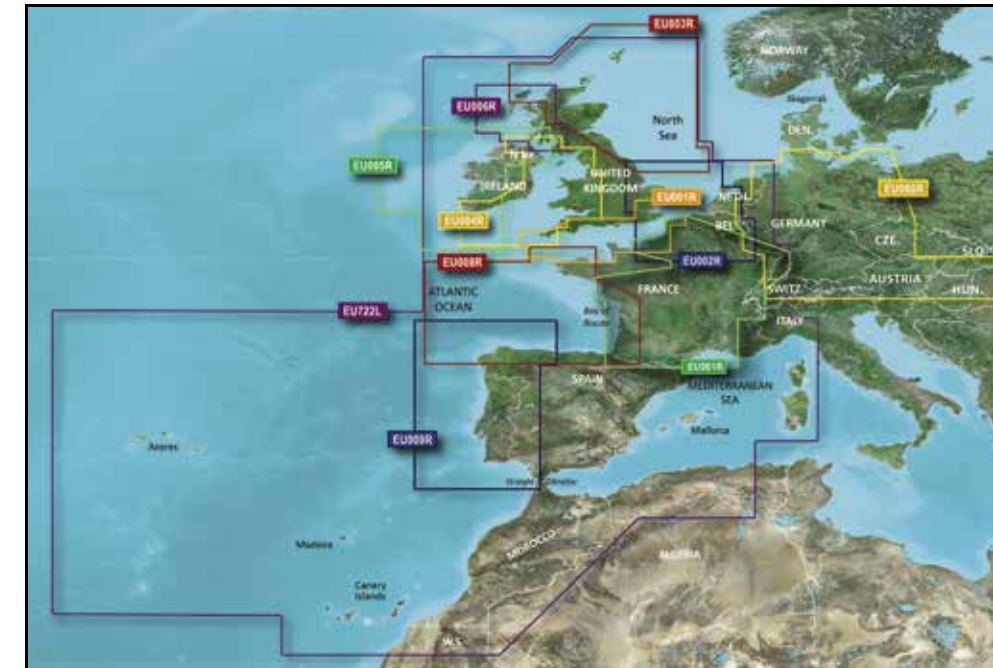
NORDICS 4

BLUECHART G3 VISION

	Baltic Sea, East Coast	Göteborg-Fyn	Århus-Kiel-Koszalin	Northern Denmark and the Eider
Region	EU065R	EU458S	EU459S	EU474S
ID Code	VEU065R	VUE458S	VUE459S	VUE474S
Part Number	010-C0849-00	010-C0802-00	010-C0803-00	010-C0818-00
Price	\$249.99	\$174.99	\$174.99	\$174.99

BLUECHART G3

	Baltic Sea, East Coast
Region	EU065R
ID Code	HXEU065R
Part Number	010-C0849-20
Price	\$129.99



EUROPE ATLANTIC COAST 1

BLUECHART G3 VISION

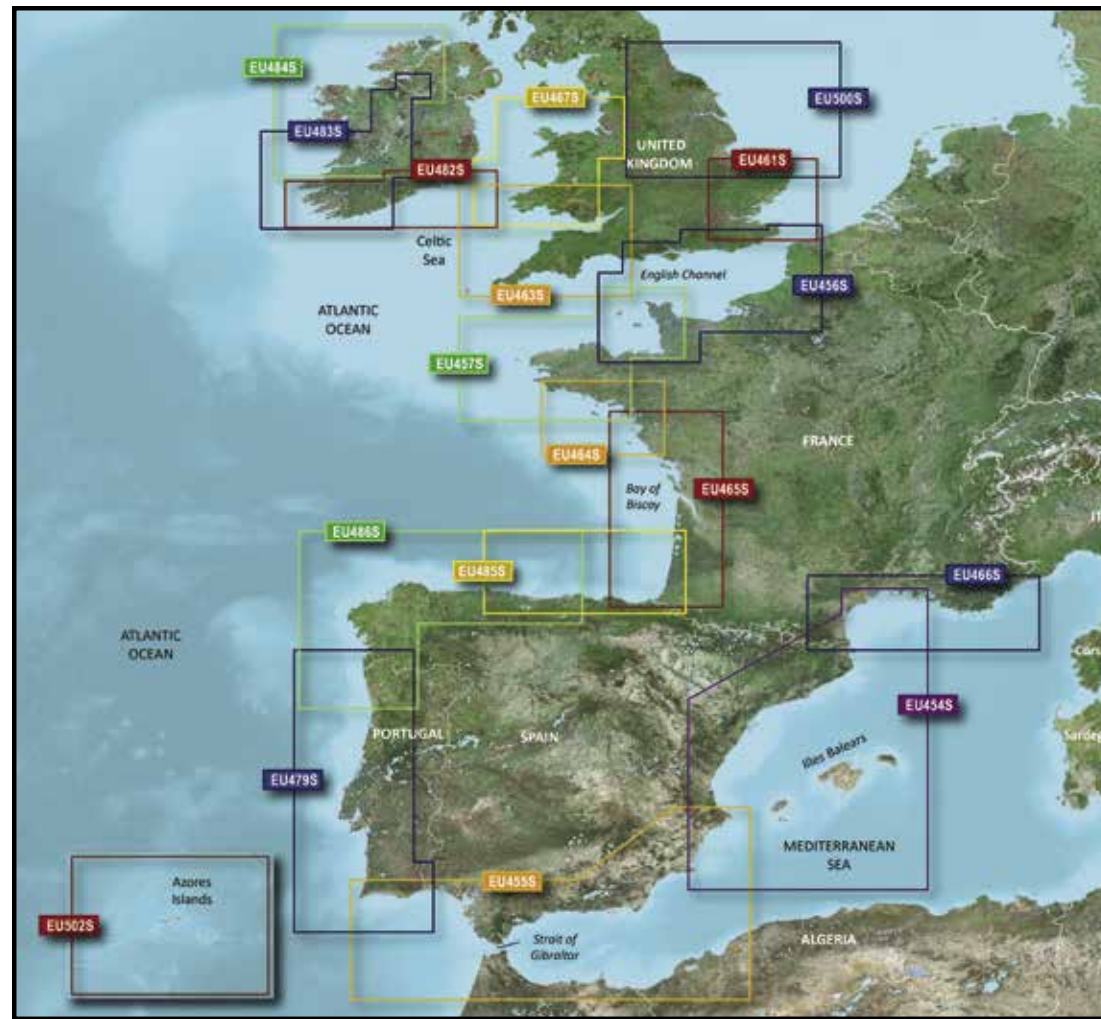
	Europe Atlantic Coast	Portugal and Northwest Spain	Bay of Biscay	Irish Sea	Ireland, West Coast	Scotland, West Coast
Region	EU722L	EU009R	EU008R	EU004R	EU005R	EU006R
ID Code	VEU722L	VEU009R	VEU008R	VEU004R	VEU005R	VEU006R
Part Number	010-C1156-00	010-C0767-00	010-C0766-00	010-C0763-00	010-C0764-00	010-C0765-00
Price	\$349.99	\$249.99	\$249.99	\$249.99	\$249.99	\$249.99

	Great Britain, Northeast Coast	Germany Inland Waters	France Inland Waters	S/E England-Belux Inland Waters	English Channel
Region	EU003R	EU060R	EU061R	EU002R	EU001R
ID Code	VEU003R	VEU060R	VEU061R	VEU002R	VEU001R
Part Number	010-C0762-00	010-C1103-00	010-C1104-00	010-C0761-00	010-C0760-00
Price	\$249.99	\$249.99	\$249.99	\$249.99	\$249.99

BLUECHART G3

	Portugal and Northwest Spain	Bay of Biscay	Irish Sea	Ireland, West Coast	Scotland, West Coast
Region	EU009R	EU008R	EU004R	EU005R	EU006R
ID Code	HXEU009R	HXEU008R	HXEU004R	HXEU005R	HXEU006R
Part Number	010-C0767-20	010-C0766-20	010-C0763-20	010-C0764-20	010-C0765-20
Price	\$129.99	\$129.99	\$129.99	\$129.99	\$129.99

	Great Britain, Northeast Coast	Germany Inland Waters	France Inland Waters	S/E England-Belux Inland Waters	English Channel
Region	EU003R	EU060R	EU061R	EU002R	EU001R
ID Code	HXEU003R	HXEU060R	HXEU061R	HXEU002R	HXEU001R
Part Number	010-C0762-20	010-C1103-20	010-C1104-20	010-C0761-20	010-C0760-20
Price	\$129.99	\$129.99	\$129.99	\$129.99	\$129.99



EUROPE ATLANTIC COAST 2



MEDITERRANEAN

BLUECHART G3 VISION

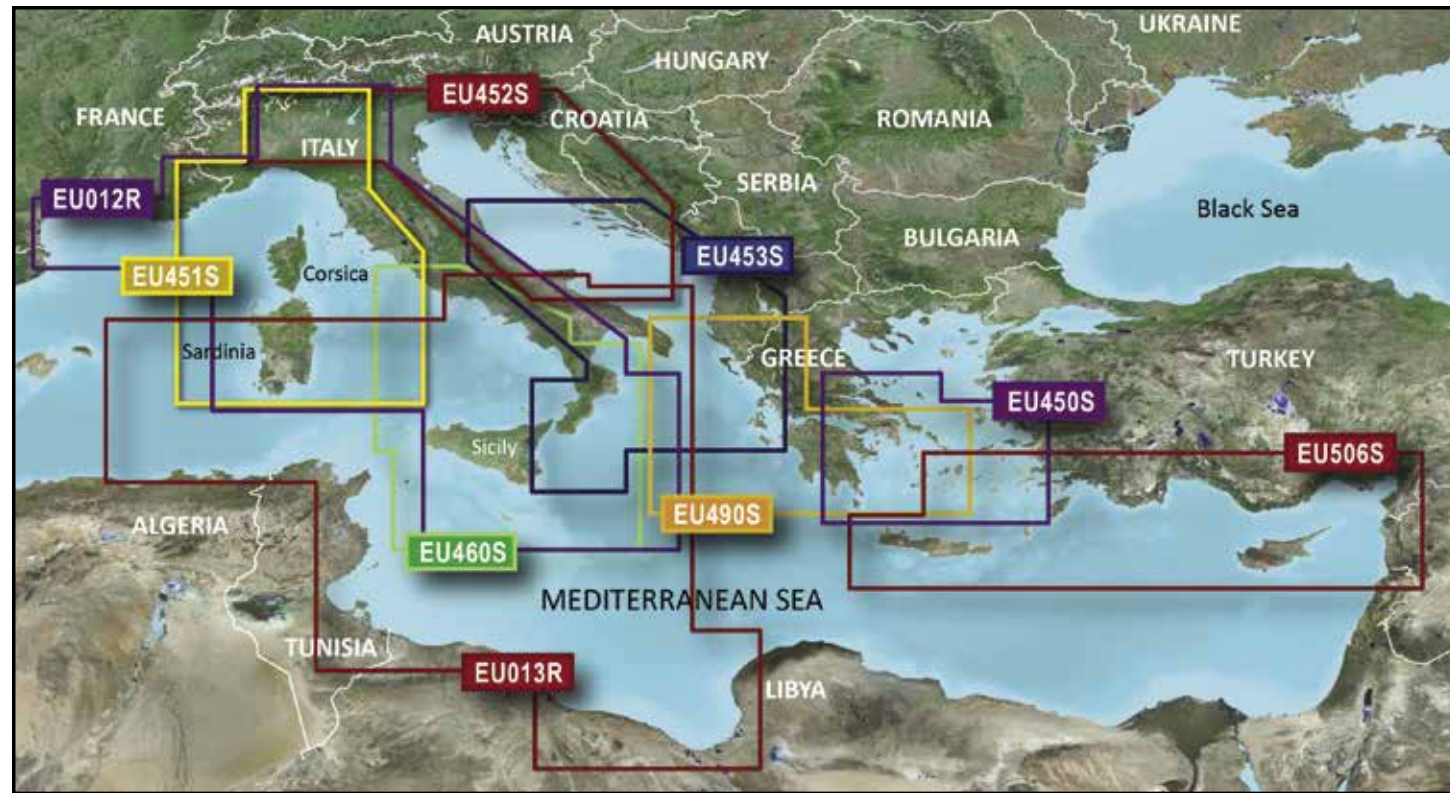
	Spain, Mediterranean Coast	Italy, Adriatic Sea	Aegean Sea and Sea of Marmara	Mediterranean Southeast	Southern Europe
Region	EU010R	EU014R	EU015R	EU016R	EU723L
ID Code	VEU010R	VEU014R	VEU015R	VEU016R	VEU723L
Part Number	010-C0768-00	010-C0772-00	010-C0773-00	010-C0774-00	010-C1157-00
Price	\$249.99	\$249.99	\$249.99	\$249.99	\$249.99

BLUECHART G3

	Spain, Mediterranean Coast	Italy, Adriatic Sea	Aegean Sea and Sea of Marmara	Mediterranean Southeast
Region	EU010R	EU014R	EU015R	EU016R
ID Code	HXEU010R	HXEU014R	HXEU015R	HXEU016R
Part Number	010-C0768-20	010-C0772-20	010-C0773-20	010-C0774-20
Price	\$129.99	\$129.99	\$129.99	\$129.99

BLUECHART G3 VISION

	Ireland North-West	Galway Bay-Cork	Wexford-Dingle Bay	Blackpool-Cardiff	Bristol Channel and England S/W	Blyth-Lowestoft
Region	EU484S	EU483S	EU482S	EU467S	EU463S	EU500S
ID Code	VUE484S	VUE483S	VUE482S	VUE467S	VUE463S	VUE500S
Part Number	010-C0828-00	010-C0827-00	010-C0826-00	010-C0811-00	010-C0807-00	010-C0844-00
Price	\$174.99	\$174.99	\$174.99	\$174.99	\$174.99	\$249.99
	Thames Estuary	English Channel, Central-East	Bretagne	Penmarch-Les Sables d'Olonne	La Baule-San Sebastian	Fuenterrabia-Gijon
Region	EU461S	EU456S	EU457S	EU464S	EU465S	EU485S
ID Code	VUE461S	VUE456S	VUE457S	VUE464S	VUE465S	VUE485S
Part Number	010-C0805-00	010-C0800-00	010-C0801-00	010-C0808-00	010-C0809-00	010-C0829-00
Price	\$174.99	\$174.99	\$174.99	\$174.99	\$174.99	\$249.99
	Galicia and Asturias	Portugal	Alicante-Cabo de Sao Vicente	Barcelona and Valencia	Golfe Du Lion-San Remo	Azores Islands
Region	EU486S	EU479S	EU455S	EU454S	EU466S	EU502S
ID Code	VUE486S	VUE479S	VUE455S	VUE454S	VUE466S	VEU502S
Part Number	010-C0830-00	010-C0823-00	010-C0799-00	010-C0798-00	010-C0810-00	010-C0846-00
Price	\$174.99	\$174.99	\$174.99	\$174.99	\$174.99	\$249.99



MEDITERRANEAN 2

BLUECHART G3 VISION

	Mediterranean Sea, Central West	Ligurian Sea-Corsica and Sardinia	Adriatic Sea, North Coast	Adriatic Sea, South Coast	Athens and Cyclades
Region	EU012R	EU451S	EU452S	EU453S	EU450S
ID Code	VEU012R	VEU451S	VEU452S	VEU453S	VEU450S
Part Number	010-C0770-00	010-C0795-00	010-C0796-00	010-C0797-00	010-C0794-00
Price	\$249.99	\$174.99	\$174.99	\$174.99	\$174.99

	Crete-Cyprus	Greece West Coast and Athens	Italy Southwest and Tunisia	Sicily-Lido di Ostia	Crete-Cyprus (Greek)
Region	EU506S	EU490S	EU013R	EU460S	GR506S
ID Code	VEU506S	VEU490S	VEU013R	VEU460S	VGR506S
Part Number	010-C0850-00	010-C0834-00	010-C0771-00	010-C0804-00	010-C1100-00
Price	\$174.99	\$174.99	\$249.99	\$174.99	\$174.99

BLUECHART G3

	Mediterranean Sea, Central West	Italy Southwest and Tunisia
Region	EU012R	EU013R
ID Code	HXEU012R	HXEU013R
Part Number	010-C0770-20	010-C0771-20
Price	\$129.99	\$129.99

SOUTH AMERICA



SOUTH AMERICA

BLUECHART G2 VISION HD

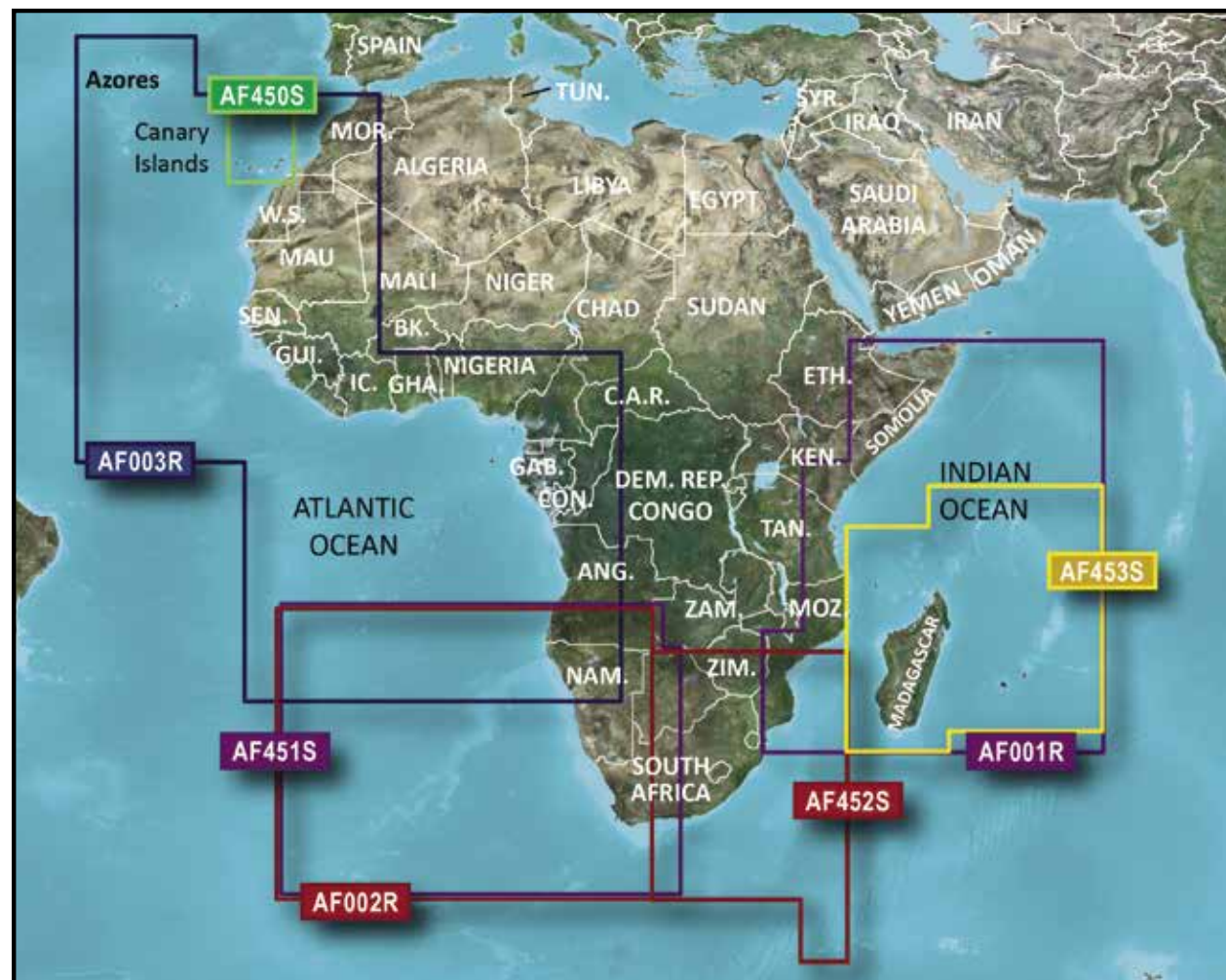
	South America East Coast	South America West Coast	Amazon River
Region	SA001R	SA002R	SA009R
ID Code	VSA001R	VSA002R	VSA009R
Part Number	010-C1062-00	010-C1063-00	010-C1066-00
Price	\$349.99	\$349.99	\$349.99

BLUECHART G2 HD

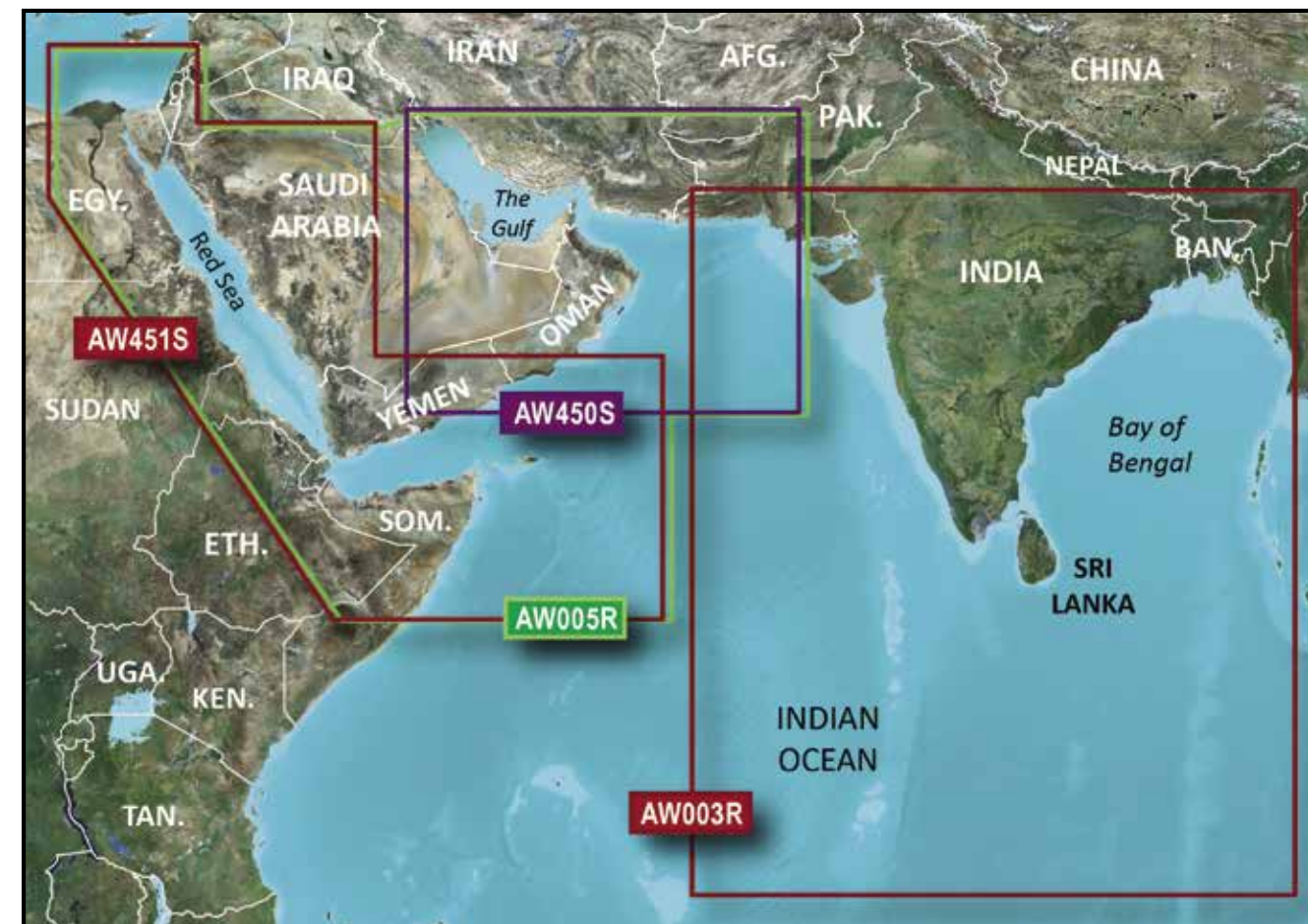
	South America East Coast	South America West Coast	Amazon River	Rio de la Plata	South America
Region	SA001R	SA002R	SA009R	SA400S	SA600X
ID Code	HXSA001R	HXSA002R	HXSA009R	HXSA400S	HXSA600X
Part Number	010-C1062-20	010-C1063-20	010-C1066-20	010-C1111-20	010-C1067-20
Price	\$149.99	\$149.99	\$149.99	\$119.99	\$219.99

AFRICA

ASIA



AFRICA



WESTERN ASIA

BLUECHART G2 VISION HD

	Eastern Africa	South Africa	Western Africa	Madeira and Canary Islands	Namibia-Knysna, SA	Knysna, SA-Beira, MZ	Mascarene Plateau and Madagascar
Region	AF001R	AF002R	AF003R	AF450S	AF451S	AF452S	AF453S
ID Code	VAF001R	VAF002R	VAF003R	VAF450S	VAF451S	VAF452S	VAF453S
Part Number	010-C0747-00	010-C0748-00	010-C0749-00	010-C0750-00	010-C0751-00	010-C0752-00	010-C1152-00
Price	\$249.99	\$249.99	\$249.99	\$174.99	\$174.99	\$174.99	\$174.99

BLUECHART G2 VISION HD

	Indian Subcontinent	The Gulf and Red Sea	The Gulf	Red Sea
Region	AW003R	AW005R	AW450S	AW451S
ID Code	VAW003R	VAW005R	VAW450S	VAW451S
Part Number	010-C0755-00	010-C0924-00	010-C0758-00	010-C0759-00
Price	\$249.99	\$249.99	\$174.99	\$174.99

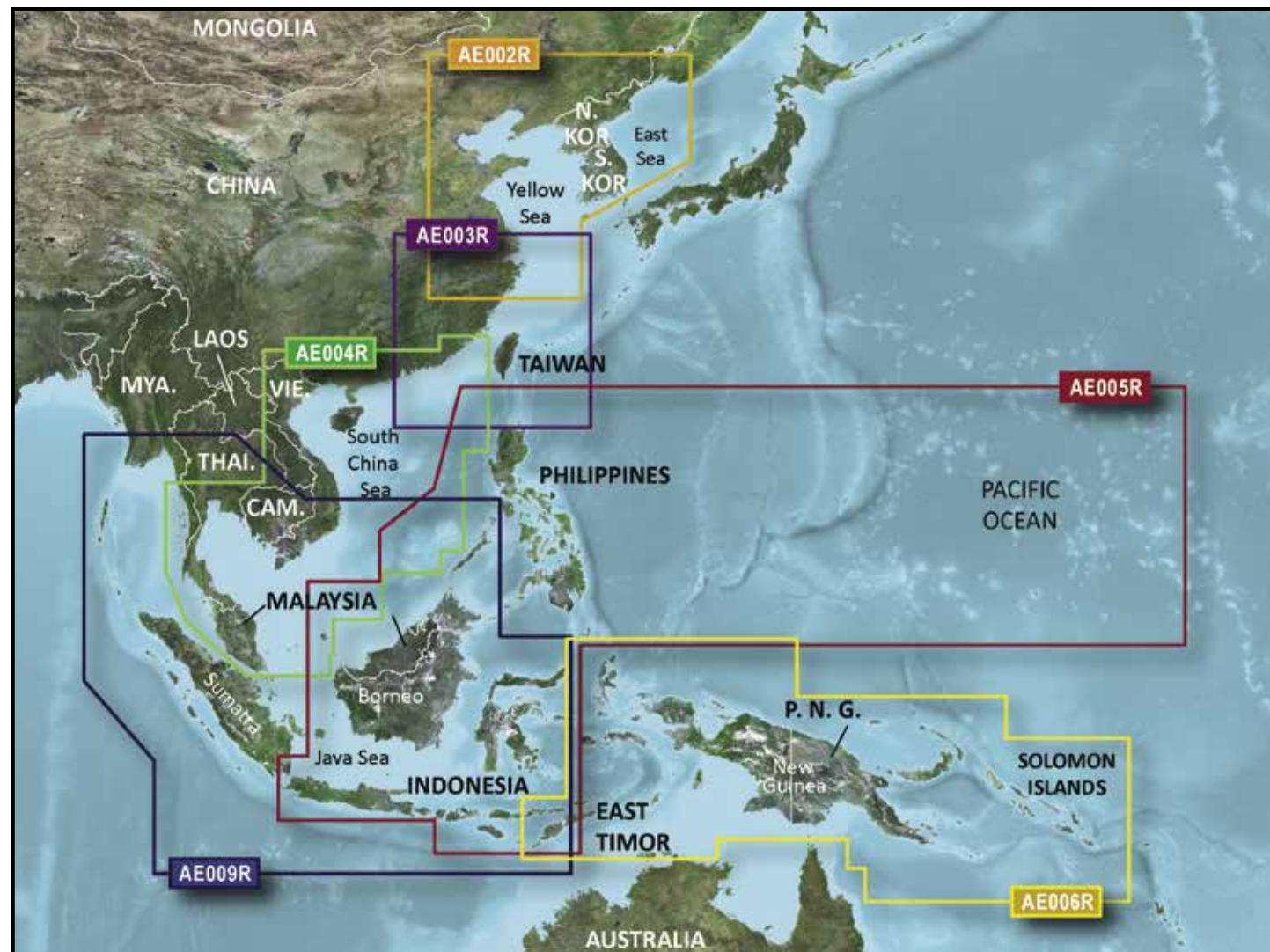
BLUECHART G2 HD

	Eastern Africa	South Africa	Western Africa
Region	AF001R	AF002R	AF003R
ID Code	HXAF001R	HXAF002R	HXAF003R
Part Number	010-C0747-20	010-C0748-20	010-C0749-20
Price	\$129.99	\$129.99	\$129.99

BLUECHART G2 HD

	Indian Subcontinent	The Gulf and Red Sea
Region	AW003R	AW005R
ID Code	HXAW003R	HXAW005R
Part Number	010-C0755-20	010-C0924-20
Price	\$129.99	\$129.99

RUSSIA



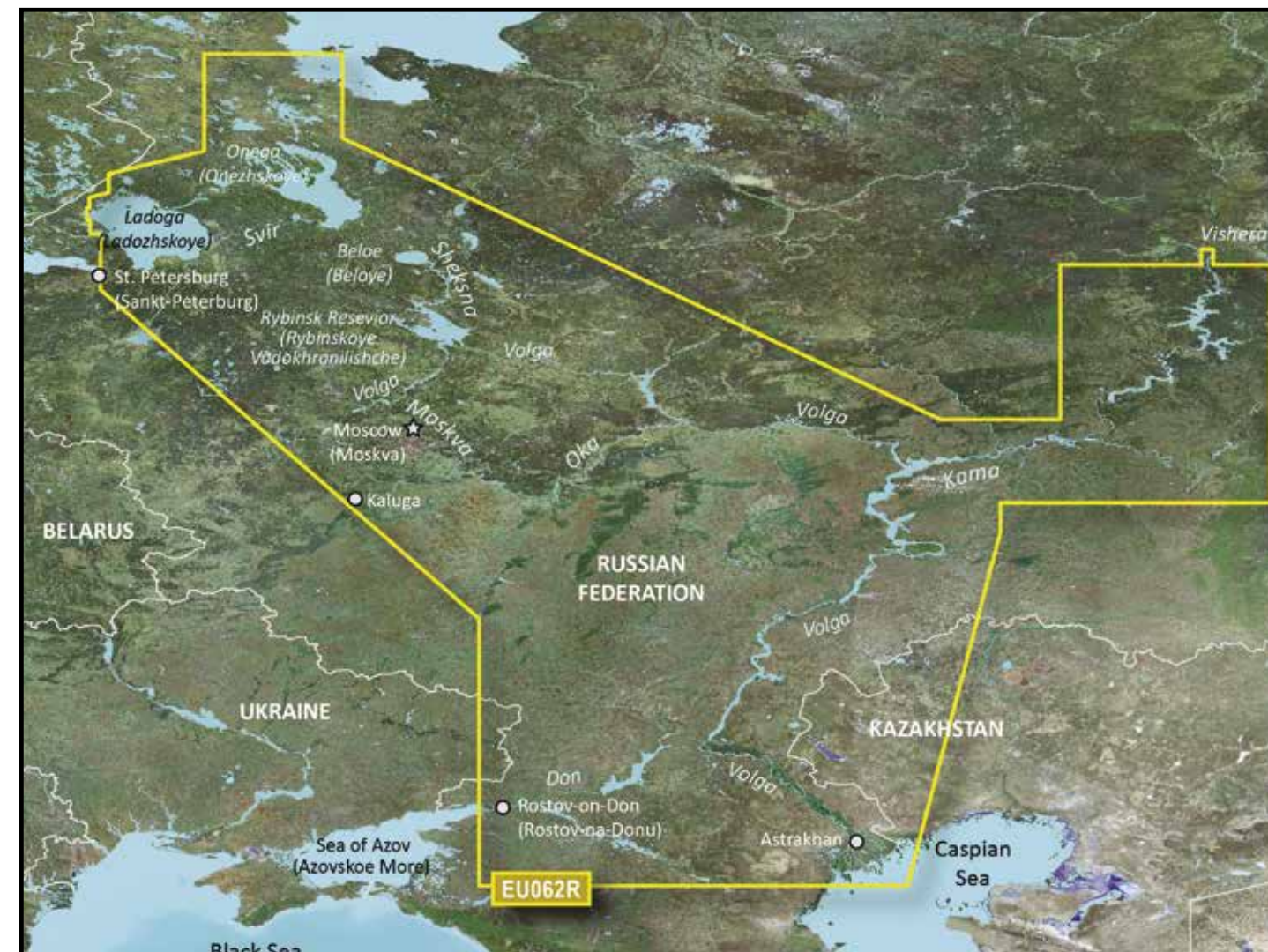
EASTERN ASIA

BLUECHART G2 VISION HD

	Yellow Sea	Taiwan	South China Sea	Sin/Mal/Indonesia	Timor-Leste-New Guinea	Philippines-Java-Mariana Is
Region	AE002R	AE003R	AE004R	AE009R	AE006R	AE005R
ID Code	VAE002R	VAE003R	VAE004R	VAE009R	VAE006R	VAE005R
Part Number	010-C0877-00	010-C0878-00	010-C0879-00	010-C0884-00	010-C0881-00	010-C0880-00
Price	\$349.99	\$349.99	\$349.99	\$349.99	\$349.99	\$349.99

BLUECHART G2 HD

	Yellow Sea	Taiwan	South China Sea	Sin/Mal/Indonesia	Timor-Leste-New Guinea	Philippines-Java-Mariana Is
Region	AE002R	AE003R	AE004R	AE009R	AE006R	AE005R
ID Code	HXAE002R	HXAE003R	HXAE004R	HXAE009R	HXAE006R	HXAE005R
Part Number	010-C0877-20	010-C0878-20	010-C0879-20	010-C0884-00	010-C0881-20	010-C0880-20
Price	\$159.99	\$159.99	\$159.99	\$159.99	\$159.99	\$159.99

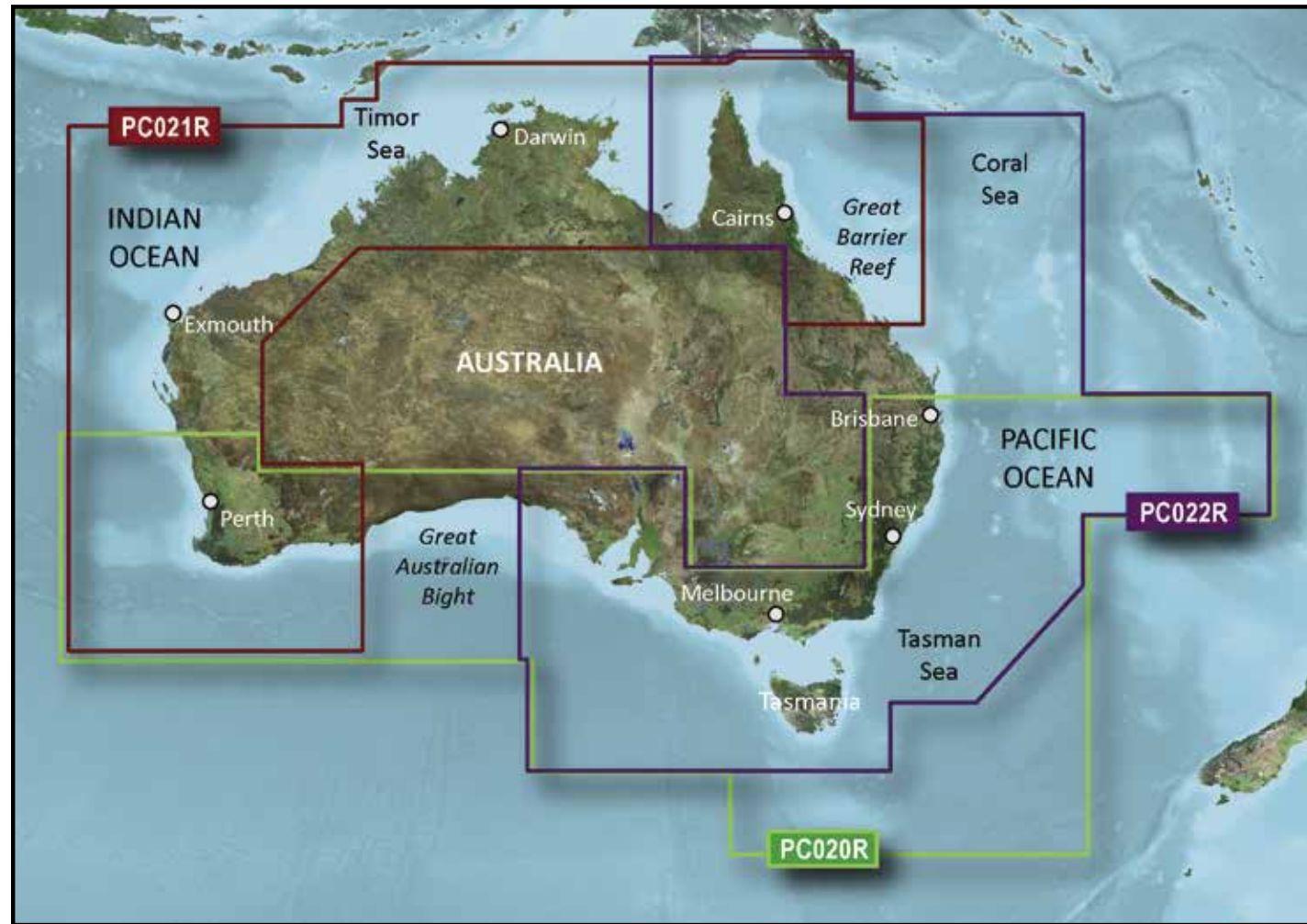


RUSSIA

BLUECHART G3

	Russian Inland Waterways
Region	EU062R
ID Code	HXEU062R
Part Number	010-C1048-20
Price	\$129.99

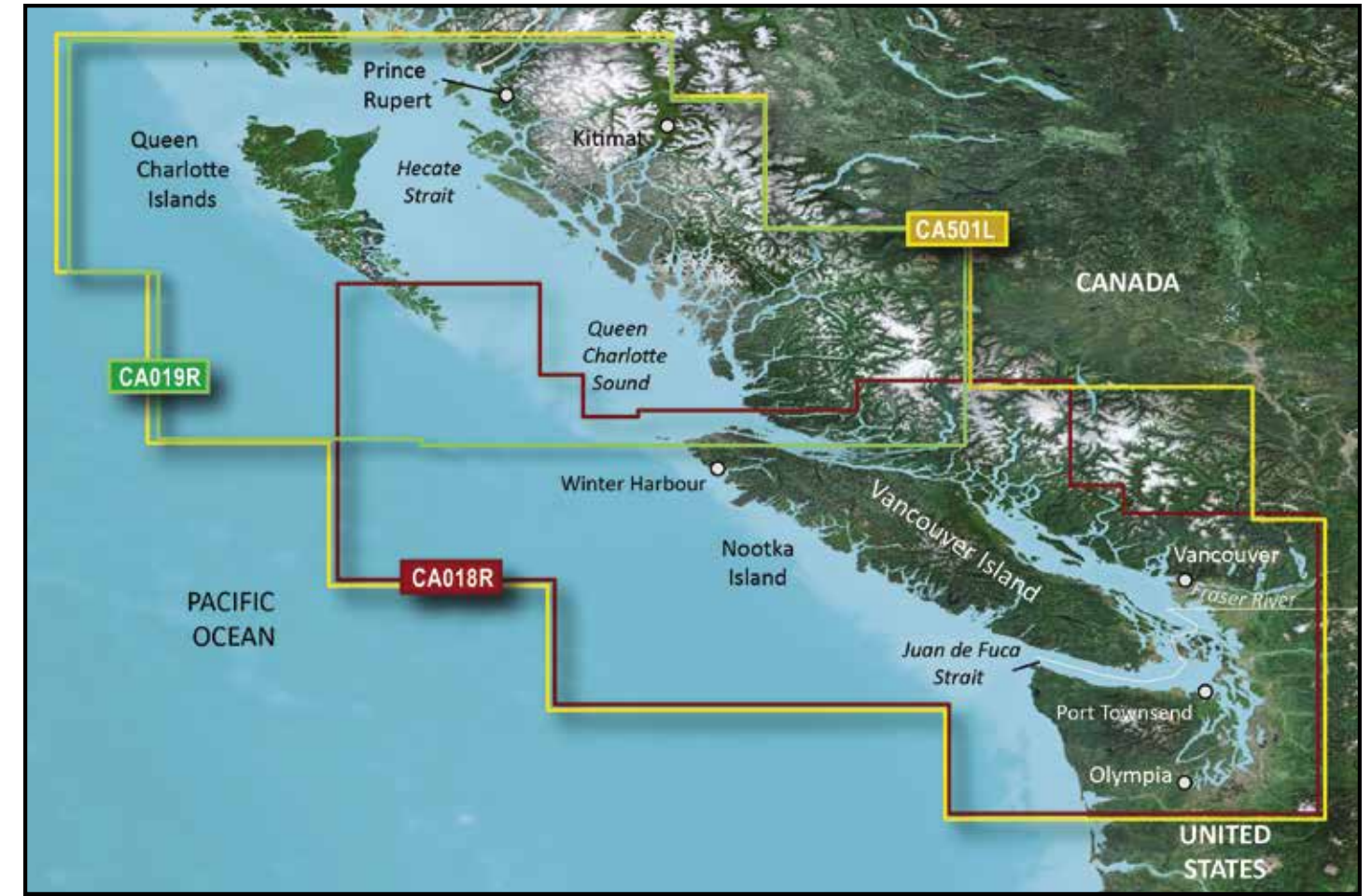
AUSTRALIA/NEW ZEALAND



AUSTRALIA/NEW ZEALAND 1

BLUECHART G2 VISION HD

	Mackay NW- Esperance	Brisbane SW- Geraldton	East Coast Australia
Region	PC021R	PC020R	PC022R
ID Code	VPC021R	VPC020R	VPC022R
Part Number	010-C0754-00	010-C0753-00	010-C0756-00
Price	\$249.99	\$249.99	\$249.99



AUSTRALIA/NEW ZEALAND 2

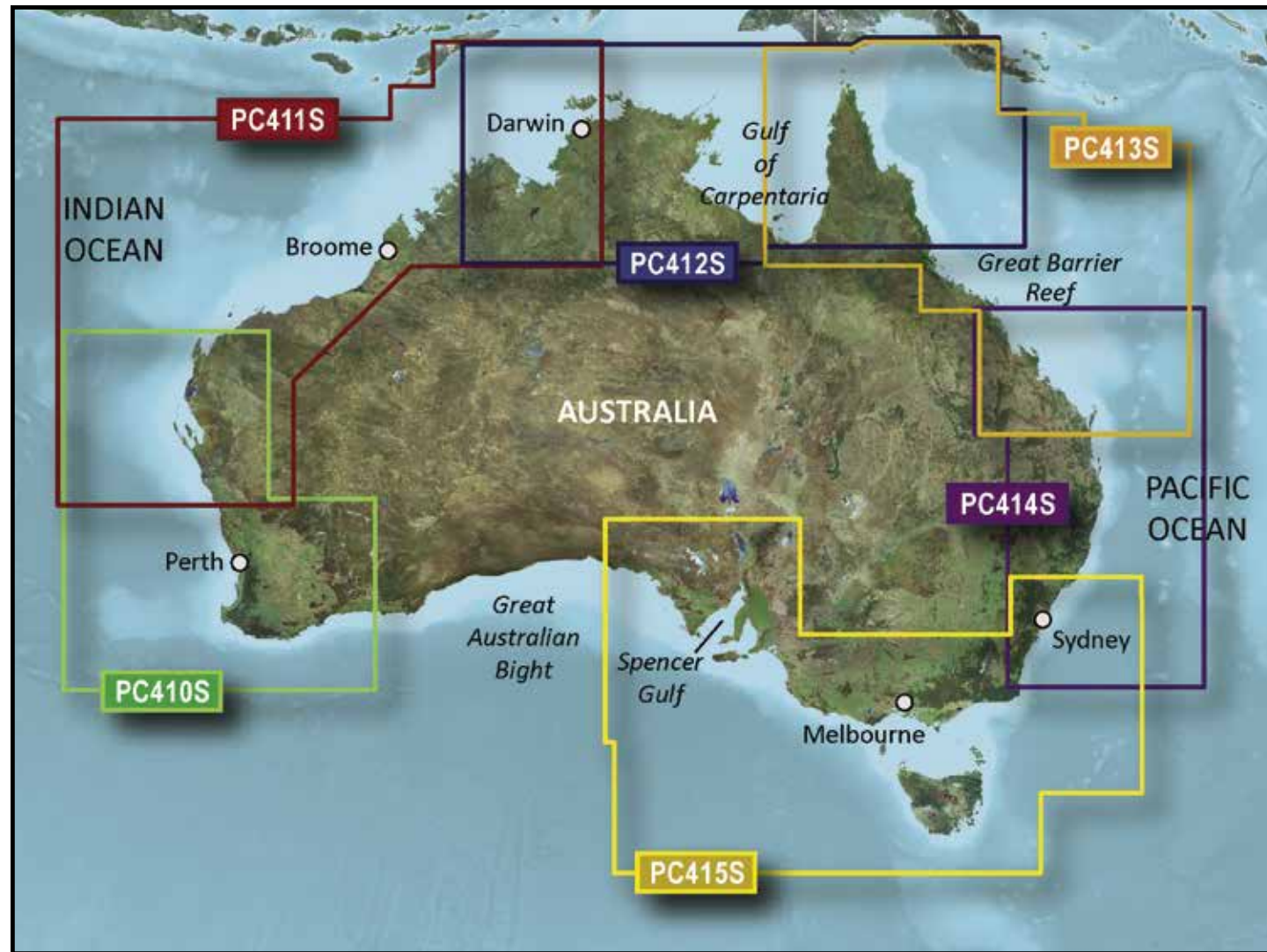
BLUECHART G2 VISION HD

	New Zealand	New Zealand North	New Zealand South
Region	PC023R	PC416S	PC417S
ID Code	VPC023R	VPC416S	VPC417S
Part Number	010-C0757-00	010-C0874-00	010-C0875-00
Price	\$249.99	\$189.99	\$189.99

BLUECHART G2 HD

	New Zealand	New Zealand North	New Zealand South
Region	PC023R	PC416S	PC417S
ID Code	HXPC023R	HXPC416S	HXPC417S
Part Number	010-C0757-20	010-C0874-20	010-C0875-20
Price	\$159.99	\$84.99	\$84.99

PACIFIC ISLANDS



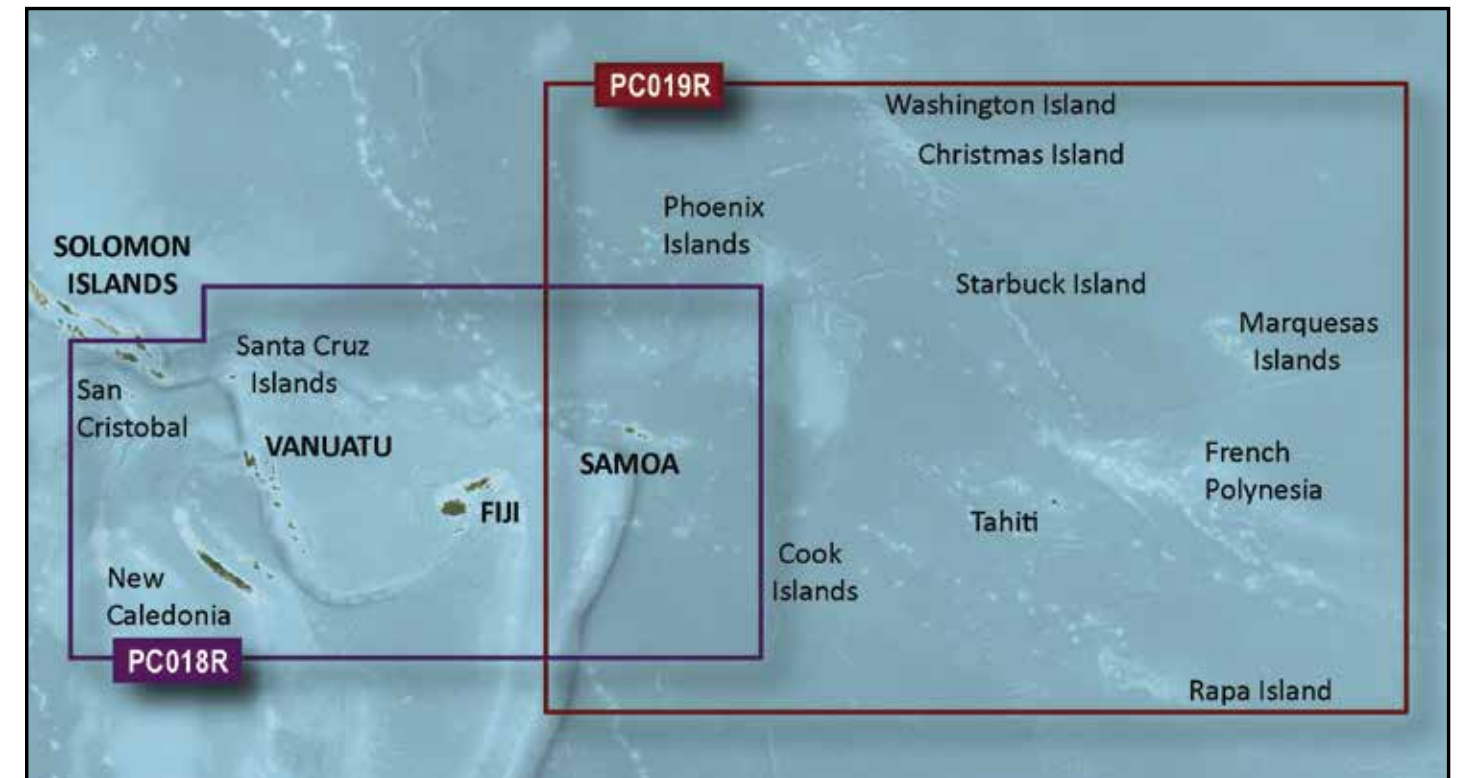
AUSTRALIA/NEW ZEALAND 3

BLUECHART G2 VISION HD

	Esperance-Exmouth Bay	Geraldton-Darwin	Admiralty Gulf WA-Cairns	Mornington Island-Hervey Bay	Mackay-Twofold Bay	Port Stephens-Fowlers Bay
Region	PC410S	PC411S	PC412S	PC413S	PC414S	PC415S
ID Code	VPC410S	VPC411S	VPC412S	VPC413S	VPC414S	VPC415S
Part Number	010-C0868-00	010-C0869-00	010-C0870-00	010-C0871-00	010-C0872-00	010-C0873-00
Price	\$189.99	\$189.99	\$189.99	\$189.99	\$189.99	\$189.99

BLUECHART G2 HD

	Esperance-Exmouth Bay	Geraldton-Darwin	Admiralty Gulf WA-Cairns	Mornington Island-Hervey Bay	Mackay-Twofold Bay	Port Stephens-Fowlers Bay
Region	PC410S	PC411S	PC412S	PC413S	PC414S	PC415S
ID Code	HXPC410S	HXPC411S	HXPC412S	HXPC413S	HXPC414S	HXPC415S
Part Number	010-C0868-20	010-C0869-20	010-C0870-20	010-C0871-20	010-C0872-20	010-C0873-20
Price	\$189.99	\$189.99	\$189.99	\$189.99	\$189.99	\$189.99



PACIFIC ISLANDS

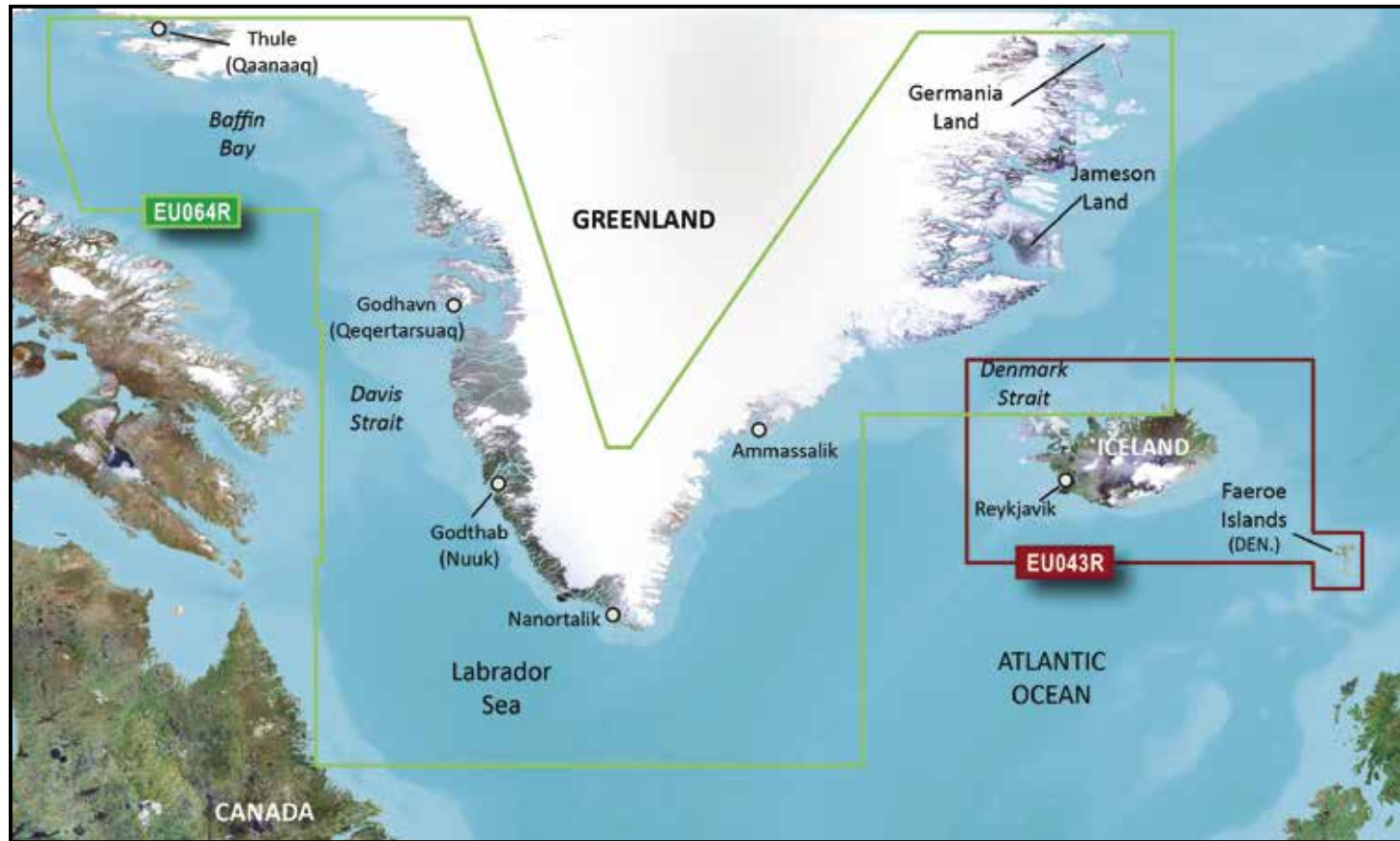
BLUECHART G2 VISION HD

	New Caledonia-Fiji	Polynesia
Region	PC018R	PC019R
ID Code	VPC018R	VPC019R
Part Number	010-C0865-00	010-C0866-00
Price	\$249.99	\$249.99

BLUECHART G2 HD

	New Caledonia-Fiji	Polynesia
Region	PC018R	PC019R
ID Code	HXPC018R	HXPC019R
Part Number	010-C0865-20	010-C0866-20
Price	\$159.99	\$159.99

GREENLAND



GREENLAND

BLUECHART G3 VISION

	Iceland-Orkney	Greenland
Region	EU043R	EU064R
ID Code	VUE043R	VEU064R
Part Number	010-C0780-00	010-C1001-00
Price	\$249.99	\$249.99

BLUECHART G3

	Iceland-Orkney	Greenland
Region	EU043R	EU064R
ID Code	HXUE043R	HXEU064R
Part Number	010-C0780-20	010-C1001-20
Price	\$129.99	\$129.99



STANDARD MAPPING



LOUISIANA ONE

	Louisiana One Classic	Louisiana One Premium	Louisiana One Professional
Part Number	010-C1162-00	010-C1140-20	010-C1164-00
Price	\$299.99	\$249.99	\$499.99



LOUISIANA EAST

	Louisiana East Classic	Louisiana East Premium	Louisiana East Professional
Part Number	010-C1165-00	010-C1166-00	010-C1167-00
Price	\$199.99	\$299.99	\$399.99



TEXAS ONE

	Texas One Classic	Texas One Premium	Texas One Professional
Part Number	010-C1174-00	010-C1175-00	010-C1176-00
Price	\$299.99	\$399.99	\$499.99



TEXAS WEST

	Texas West Classic	Texas West Premium	Texas West Professional
Part Number	010-C1177-00	010-C1178-00	010-C1179-00
Price	\$199.99	\$299.99	\$399.99



LOUISIANA CENTRAL

	Louisiana Central Classic	Louisiana Central Premium	Louisiana Central Professional
Part Number	010-C1168-00	010-C1169-00	010-C1170-00
Price	\$199.99	\$299.99	\$399.99



LOUISIANA WEST

	Louisiana West Classic	Louisiana East Premium	Louisiana East Professional
Part Number	010-C1171-00	010-C1172-00	010-C1173-00
Price	\$199.99	\$299.99	\$399.99



TEXAS EAST

	Texas East Classic	Texas East Premium	Texas East Professional
Part Number	010-C1180-00	010-C1181-00	010-C1182-00
Price	\$199.99	\$299.99	\$399.99



MISSISSIPPI SOUND

	Mississippi Sound Classic	Mississippi Sound Premium	Mississippi Sound Professional
Part Number	010-C1183-00	010-C1184-00	010-C1185-00
Price	\$199.99	\$299.99	\$399.99

STANDARD MAPPING



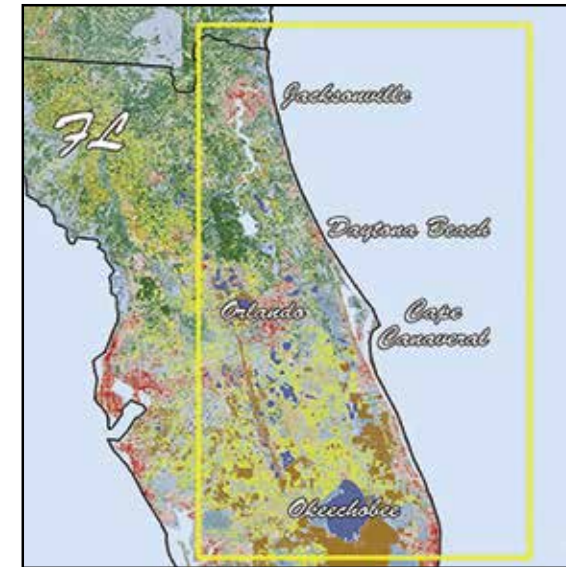
GULF COAST

	Gulf Coast Classic	Gulf Coast Premium	Gulf Coast Professional
Part Number	010-C1186-00	010-C1187-00	010-C1188-00
Price	\$299.99	\$399.99	\$499.99



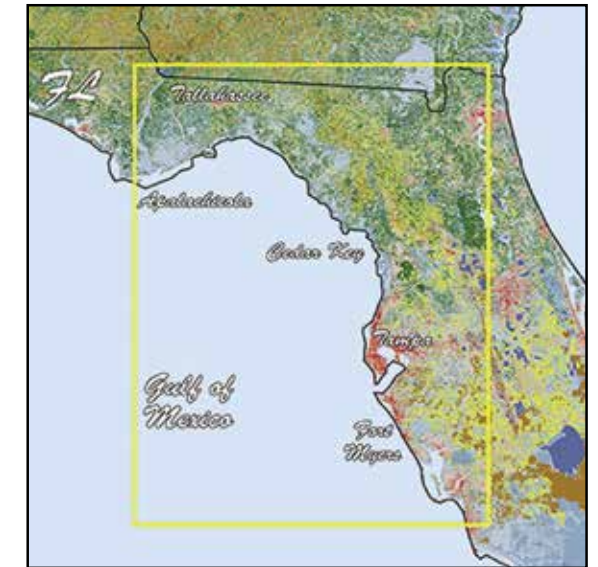
EMERALD COAST

	Emerald Coast Classic	Emerald Coast Premium	Emerald Coast Professional
Part Number	010-C1189-00	010-C1190-00	010-C1191-00
Price	\$199.99	\$299.99	\$399.99



FLORIDA EAST PENINSULA

	Florida East Peninsula Classic	Florida East Peninsula Premium	Florida East Peninsula Professional
Part Number	010-C1198-00	010-C1199-00	010-C1200-00
Price	\$199.99	\$299.99	\$399.99



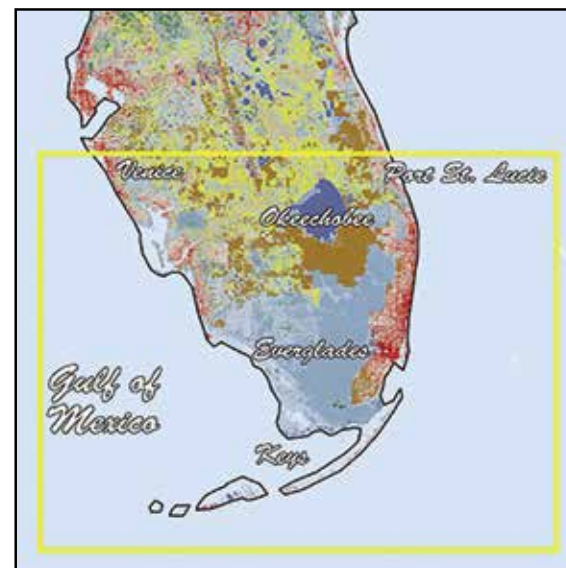
FLORIDA WEST PENINSULA

	Texas West Classic	Texas West Premium	Texas West Professional
Part Number	010-C1177-00	010-C1178-00	010-C1179-00
Price	\$199.99	\$299.99	\$399.99



FLORIDA ONE

	Florida One Classic	Florida One Premium	Florida One Professional
Part Number	010-C1192-00	010-C1193-00	010-C1194-00
Price	\$299.99	\$399.99	\$499.99



FLORIDA KEYS

	Florida Keys Classic	Florida Keys Premium	Florida Keys Professional
Part Number	010-C1195-00	010-C1196-00	010-C1197-00
Price	\$199.99	\$299.99	\$399.99

BlueChart® g3 HD, g3 Vision® HD, g2 HD, g2 Vision® HD



WARNING

GARMIN MAKES NO WARRANTY AS TO THE ACCURACY OR COMPLETENESS OF MAP DATA IN THIS PRODUCT AND DISCLAIMS ANY AND ALL EXPRESS, IMPLIED OR STATUTORY WARRANTIES, INCLUDING ANY IMPLIED WARRANTY OF MERCHANTABILITY OR FITNESS FOR A PARTICULAR PURPOSE. IT IS THE USER'S RESPONSIBILITY TO USE THIS PRODUCT PRUDENTLY. THIS PRODUCT IS INTENDED TO BE USED ONLY AS A TRAVEL AID AND MUST NOT BE USED FOR ANY PURPOSE REQUIRING PRECISE MEASUREMENT OF DIRECTION, DISTANCE, LOCATION OR TOPOGRAPHY.

WARNING:

GARMIN BLUECHART DATA AND BOTTOM INFORMATION ARE FOR NAVIGATION REFERENCE ONLY, AS BOTTOM CONDITIONS ARE CONTINUALLY CHANGING. THIS PRODUCT IS FOR GENERAL REFERENCE.

WARNINGS: The electronic chart is an aid to navigation designed to facilitate the use of authorized government charts, not to replace them. Only official government charts and notices to mariners contain all information needed for the safety of navigation, and as always, the captain is responsible for their prudent use.

ACKNOWLEDGEMENT OF THIRD-PARTY NOTICES AND COPYRIGHT LICENSES: This product may contain cartography and other data from one or more of the following Third-Party sources; to the extent that any such source is used, the relevant provisions below shall apply:

Refer to: <https://www.garmin.com/en-US/legal/bluechart-g2-disclaimer>

WARNING:

No national hydrographic office (HO), State Authority, and their licensors have verified the information in this product or quality assured it, and none accept liability for the accuracy of reproduction or any modifications made thereafter. No national hydrographic office and their licensors make any warranties or representations, express or implied, with respect to this product. No national hydrographic office warrants that the product satisfies national or international regulations regarding the use of the appropriate products for navigation or that it contains the latest hydrographic information available.

WARNING:

All charts are digitized directly from existing government and other official charts and should not be used solely for navigation. Digital charts are intended to be used as an aid to traditional navigational charts, not as a replacement. Only official government charts and notices to mariners and notices to shipping/NAVAREA broadcasts and written alerts contain all information needed for the safety of navigation, and as always, the captain is responsible for their prudent use. A prudent navigator never relies on any single source of navigational information. Garmin strives to provide its customers with the most economical, accurate and up-to-date chart data. However, features are continually changing, so the data may not reflect the latest modifications and/or additions in your area. Garmin makes no warranty as to the accuracy or completeness of the data.

WARNING:

Some of the information in this product may have been produced, in part or whole, from withdrawn national hydrographic office products. New charts and/or NTM corrections will render this product obsolete and inaccurate.

WARNING:

U.S. National Park Service/Department of the Interior (NPS) property ownership data is compiled from deeds, plats, surveys and other source data. These are not engineering quality drawings and should be used for administrative purposes only. The National Park Service shall not be held liable for improper or incorrect use of the data described and/or contained herein. These data and related graphics are not legal documents and are not intended to be used as such. The information contained in these data is dynamic and may change over time. The data are not better than the original sources from which they were derived. It is the responsibility of the data user to use the data appropriately and consistent within the limitations of geospatial data in general and these data in particular. The related graphics are intended to aid the data user in acquiring relevant data; it is not appropriate to use the related graphics as data. The National Park Service gives no warranty, expressed or implied, as to the accuracy, reliability, or completeness of these data. It is strongly recommended that these data are directly acquired from an NPS server and not indirectly through other sources which may have changed the data in some way. Although these data have been processed successfully on a computer system at the National Park Service, no warranty expressed or implied is made regarding the utility of the data on another system or for general or scientific purposes, nor shall the act of distribution constitute any such warranty. This disclaimer applies both to individual use of the data and aggregate use with other data. The data is intended for use as a tool for display and general GIS analysis purposes only. It is in no way intended for engineering or legal purposes. The data accuracy is checked against best available sources which may be dated. NPS assumes no liability for use of this data.

WARNING:

The Great Barrier Reef Marine Park Authority ("the Authority") does not check the information in this product and accepts no liability for the accuracy of copying or for any modifications that may have been made to the information which it has supplied. Use of and entry to the Great Barrier Reef Marine Park is controlled by the Great Barrier Reef Marine Park Act 1975 (Cth) ("the Act"). Penalties apply for use of or entry to a zone for a purpose other than for a purpose permitted under the Great Barrier Reef Marine Park Zoning Plan 2003 ("the Zoning Plan") prepared by the Authority pursuant to section 32 of the Act. This product does not contain all information concerning permitted use or entry under the Zoning Plan. For purposes of use of or entry to the Great Barrier Reef Marine Park, this product should only be used in conjunction with the Zoning Plan and the Great Barrier Reef Marine Park Regulations 1983 (Cth). For purposes of navigation, users should consult official navigation charts released by relevant government authorities.

WARNING:

The Department of Transportation does not check the information in this product and the Crown in right of the State of Western Australia accepts no liability for the accuracy of copying or for any modifications that may have been made to the information which it has supplied. Furthermore, the Crown in right of the State of Western Australian does not warrant the accuracy of any information contained in any of its charts, maps or data of whatsoever nature.

WARNING:

The open geographic data is provided 'as is' and the Danish Geodata Agency shall not be liable for content, origin, errors or omissions in the Data and shall not be liable for any loss or damage caused by its use.

CAUTION:

The bathymetric reactions contained in this product have been carried out with the standards in force at the time of their publication. No verification and/or validation by the Government of Quebec. Assumes no responsibility for the accuracy of the bathymetric data or data included in this product cannot be responsible for the conclusions obtained or damage suffered as a result of the use of this product. Bathymetric data from Quebec provide general representations and structures under the surface of the water. The bathymetric data of Quebec are not suitable for use to surface navigation. It may expect non-mapped obstacles.

DISCLAIMER:

This information is intended as a general guide to artificial reef sites off the Georgia coast and is not intended for use as a navigational guide for offshore and coastal waters. The Hawaii Artificial Reef data is provided "AS IS" and without warranties of any kind. The information may change without prior notice and may not be the latest update. Users of this data are therefore fully responsible for checking the accuracy, completeness, currency and suitability of content found in this data themselves. TPWD provides the Artificial Reefs Interactive Mapping Application as a public service in support of TPWD's mission to manage and conserve the natural and cultural resources of Texas and to provide hunting, fishing and outdoor recreation opportunities for the use and enjoyment of present and future generations. TPWD makes no representation or warranty, express or implied, regarding the accuracy, completeness, currency, or suitability of any information provided herein for any purpose. In consideration for using the Artificial Reefs Interactive Mapping Application all persons thereby release and hold harmless TPWD from and against any and all claims and/or damages that may result from use of the information contained or posted therein.

DISCLAIMER:

This product has been created by Garmin Ltd. And its subsidiaries, using data owned by and provided under license from the Province of British Columbia. Reproduction of this product or any such data by any means is prohibited also "DO NOT USE THESE MAPS FOR NAVIGATIONAL PURPOSES. These maps may not reflect current conditions. Uncharted hazards may exist."

DISCLAIMER:

This data was produced by the Lower Colorado River Authority (LCRA) for its own use. Accordingly, certain information, features, or details may have been emphasized over others, or may have been left out. The LCRA does not warrant the accuracy of this data, either as to scale, accuracy or completeness. IN ADDITION, THE LCRA EXPRESSLY DISCLAIMS ANY AND ALL WARRANTIES, EXPRESSED OR IMPLIED, INCLUDING THE WARRANTIES OF MERCHANTABILITY AND FITNESS FOR PURPOSE. If this data is reproduced or displayed on a map, the reproducer shall insure that this disclaimer accompanies the map, and in the event the reproducer fails to include a copy of this disclaimer with the map or data, the reproducer hereby agrees to indemnify, defend, and hold harmless the LCRA and its directors, officers, and employees from and against any and all claims, demands, suits, or judgments, directly or indirectly arising out of reproducer's dissemination of the map or data to others.

"This reproduction, partial or complete, of any National Geospatial-Intelligence Agency (NGA), National Imagery and Mapping Agency (NIMA) or Defense Mapping Agency (DMA) product, information or data is not approved, authorized or endorsed by the Secretary of Defense, the Director of National Intelligence, the Director, NGA or any other element of the US Government. The US Government and NGA accept no liability for the accuracy or quality of this reproduction or the use of any NGA, NIMA or DMA products, information or data."

"This product has been produced by Navionics based on "Canadian Hydrographic Service (CHS)" data, following any minimum standards/guidelines that may have been established by CHS, pursuant to CHS Digital Value-Added Reseller Agreement No.2017-1114-1260-N. The incorporation of data sourced from CHS in this product shall not be construed as constituting an endorsement by CHS of this product. This product does not meet the requirements of the Charts and Nautical Publications Regulations,1995 under the Canada Shipping Act, 2001. Charts and publications issued by or on the authority of CHS must be used to meet the requirements of those regulations."

"Contains information published by the Canadian Coast Guard and Department of Fisheries and Oceans licensed under the Canadian Coast Guard Open Information License. This Information is available in its original format for free download on the Canadian Coast Guard website and the Monthly Edition of the Notices to Mariners (NOTMAR) website"

"The bathymetric metadata and Digital Terrain Model data products have been derived from the EMODnet Hydrography portal - <http://www.emodnet-hydrography.eu>. -This portal was initiated by the European Commission as part of developing the European Marine Observation and Data Network (EMODNet). The overall objective of EMODnet is to create pilots to migrate fragmented and inaccessible marine data into interoperable, continuous and publicly available data streams for complete maritime basins. The Hydrography portal development started in June 2009 and now provides a range of options for freely browsing and downloading new Digital Terrain Models (DTM) for a large part of the European seas. The downloadable tiles are freely available in a number of formats. The EMODnet digital bathymetry has been produced from bathymetric survey data and aggregated bathymetry data sets collated from public and private organizations. These are processed and quality controlled. A further refinement and expansion is underway, by gathering additional survey data sets, expanding geographical coverage to all European sea regions and upgrading the DTM grid resolution, and will result in new releases in time. The portal also includes a metadata discovery service that gives clear information about the background survey data used for the DTMs, their access restrictions, originators and distributors."

"State of Queensland, Department of Transport and Main Roads (Maritime Safety Queensland). When using the Beacon to Beacon Guide booklets and/or the maps contained therein for commercial or non-commercial purposes, the Department of Transport and Main Roads (Maritime Safety Queensland) gives no warranty of any kind whether express, implied, statutory or otherwise in respect to the availability, accuracy, currency, completeness, quality or reliability of the information or that the information will be fit for any particular purpose or will not infringe any third party Intellectual Property rights and the liability (including without limitation, liability in negligence, negligent misstatement and pure economic loss) of the Department of Transport and Main Roads (Maritime Safety Queensland) for any direct, indirect or consequential loss, damage, cost or expense howsoever resulting from the use of, or reliance on, the information is entirely excluded".

"This Garmin electronic marine chart incorporates Data which is ©Commonwealth of Australia ("Great Barrier Reef Marine Park Authority, 2019", Marine Parks from the "Department of the Environment and Energy, 2019"). The Data has been used in this Garmin electronic marine chart with the permission of the Commonwealth. The Commonwealth has not evaluated the Data as altered and incorporated within this Garmin electronic marine chart, and therefore gives no warranty regarding its accuracy, completeness, currency or suitability for any particular purpose."

"The "Crown in Right of the State of Western Australia" accepts no liability for the accuracy of copying of information contained in this product and does not warrant that this product meets any regulations as an appropriate product for navigation."

"Japan Coast Guard (JCG) Permission No 252509-A,

本NAVIONICS電子参考図及びNAVIONICSアプリは航海用電子海図ではありません,詳細な情報及び最新の情報については、政府発行の海図、水路誌及び灯台表並びに水路通報及び航海警報を参照してください,海上保安庁許可第252509号 測地系：世界測地系WGS-84"

LakeVü™ HD Ultra Lakes DEM data © 2012-2019 Intermap Technologies Inc. All rights reserved. Intermap, the Intermap logo, and NEXTmap is a registered trademark of Intermap Technologies, Inc. in the U.S. and other countries.

Canadian shoreline information in this product is reproduced, in whole or part, courtesy of CanVec+ Government of Canada; © Department of Natural Resources Canada; Earth Sciences Sector; Canada Centre for Mapping and Earth Observation. All rights reserved. <http://www.geogratis.gc.ca/geogratis/en/index.html>.

**Satellite imagery is included for many BlueChart g2 Vision HD products. BlueChart g2 Vision HD does not contain photos for all products.

HERE road data is included for many BlueChart g2 Vision HD products. Not all products contain road data. © 1987-2019 HERE. All rights reserved. Use of the Map Data is subject to certain restrictions and/or requirements imposed by third party suppliers and/or governmental or regulatory authorities as further set forth at <https://legal.here.com/terms/general-content-supplier/terms-and-notices.html>.

Additional city point data is courtesy of National Highway Planning Network on behalf of Federal Highway Administration (FHWA), United States Department of Transportation.

All above Companies, Institutions and Hydrographic Offices have not verified the product and do not accept liability for its accuracy.

OTHER PARTNERS

"Transform and Lighting, www.trasformandlighting.com",

"Regione Toscana, Programma Operativo Regionale, Obiettivo Competitività Regionale e Occupazione (PORCreO) 2007-2013, Fondo Europeo di Sviluppo Regionale, Unione Europea"

Copyright © 2019 Navionics

NOTICE:

Federal and State laws provide for the protection of certain archaeological and other cultural resources, including objects and sites that might be found in lakes and other bodies of water. It is your responsibility to know about and comply with these laws at all times.

NOTICE:

New Chart Guarantee ensures with this purchase you are entitled to the newest charts available. This product may be programmed on a recycled data card.

